

# PRODUCT CATALOGUE



*NZ's Specialist provider of*

**DAIRY EFFLUENT EQUIPMENT**

**NZ 0800 464 393**

**[nevadagroup.co.nz](http://nevadagroup.co.nz)**

**AUS 1800 963 490**

**[nevadagroup.com.au](http://nevadagroup.com.au)**

 **nevada**<sup>®</sup>  
Sustainable Effluent Management

## Welcome to Nevada

The effluent equipment specialists trusted by New Zealand and Australian dairy farmers.

We provide complete, accredited design, supply, and installation of effluent systems, as well as a full range of tractor-driven (PTO) equipment. At Nevada, we focus solely on effluent management—working closely with you to understand your farm and deliver tailored solutions or equipment that boost profitability.

### What sets us apart:

- We specialise exclusively in dairy effluent management systems—no distractions, no compromise.
- As accredited designers, we offer both electric-powered and tractor-driven equipment options.
- Our large inventory holding ensures you get what you need, when you need it.

Nevada, the brand you can trust for better effluent management.

*\*Terms and conditions apply. Nevada Ltd endeavors to ensure that the information presented in this publication is accurate, current and correct. However, we do not accept any liability for errors, omissions, or outdated content. Nevada Ltd reserves the right to alter specifications, components, design and prices, at our discretion and without notice. Other conditions may apply. All material and information presented in this publication is copyright 2025 Nevada Ltd. All rights reserved. All product warranties are limited.*

Q2-2025

*Pictured: 14,700L Tandem Slurry Tanker, Bay of Plenty*



**Year  
Warranty**



**Trusted for  
Safety & Reliability®**





*NZ's Specialist provider of*  
**DAIRY EFFLUENT EQUIPMENT**

Slurry Tankers	2
Drag Hose Systems	14
Stirrers	20
Irrigators	29
Pumps	39
Storage	49
Yard Scraper	53



# NEVADA SLURRY TANKERS

Invest in New Zealand's best slurry tankers! Available in single, tandem and tridem axle models, ranging from 6,100L to a massive 43,000L.

Manufactured from the highest-grade steel and galvanised inside and out to provide heavy-duty performance that will last a lifetime. What's more, all Nevada Slurry Tankers include our recommended RainWave™ nutrient spreaders as a standard feature (although other spreading applicators are available). Now you can really make use of that liquid gold!

Nevada Slurry Tankers allow you to reap the benefits of applying raw farm dairy effluent to pasture 'little and often' for increased fertility and pasture growth, and with the Nevada RainWave™ you'll be spreading more nutrients, further and more evenly.

**The grass is always greener when you've got a Nevada.**



*Pictured: 12,800L Tandem Slurry Tanker, Gordon Bryftum, Waipua*





# NEVADA SINGLE AXLE SLURRY TANKERS



Trusted for  
Safety & Reliability



2 Year  
Warranty

Ideal for smaller farms or if you need the ultimate maneuverability.

Single axle tankers are easy to manoeuvre in and around gateways and other tight access areas with less scuffing on grass.

Model	MB60-EX	MB60-EXA	MB80-EX	MB80-EXA	MB100-EX	MB100-EXA
Tank Size	6,150L	6,150L	8,200L	8,200L	10,000L	10,000L
Length	5.9m	5.9m	6.3m	6.3m	7.2m	7.2m
Pump	8,000L/min	8,000L/min	8,000L/min	8,000L/min	13,500 Ballast	13,500 Ballast
Axle Type	Single	Single	Single	Single	Extra HD	Extra HD
Wheels	550/45-22.5	550/45-22.5	550/60-22.5	550/60-22.5	650/55R26.5	650/55R26.5
Suspension	Drawbar optional	Drawbar optional	Drawbar optional	Drawbar	Drawbar	Drawbar
Auto-Filling Arm	No	Standard Front Mount	No	Standard Front Arm	No	Standard Front Mount
Applicator Type	RainWave™	RainWave™	RainWave™	RainWave™	RainWave™	RainWave™
Min Tractor requirements	60hp	60hp	80hp	80hp	100hp	100hp
Tare weight	2,380kg	2,530kg	2,880kg	3,030kg	3,580kg	3,730kg

*\*Other sizes & specifications available. Contact us about your requirements.*



# NEVADA TANDEM AXLE SLURRY TANKERS



Trusted for  
Safety & Reliability®



2 Year  
Warranty

Tandem axle slurry tankers 8,200L - 16,500L will perform better over rolling country, with a much smoother ride than a single axle.

With more wheels there is less ground pressure, so you will go more places and get more done. Save-time with the high efficiency auto-filling arm!

Model	MB100-4R	MB120-4R	MB140-4R	MB160-4R
Tank Size	10,000L	12,800L	14,700L	16,500L
Length	7.2m	7.4m	7.9m	8.4m
Pump	13,500L Ballast	13,500L Ballast	13,500L Ballast	16,000L Ballast
Axle Type	Tandem	Tandem	Tandem	Tandem
Steering Axle	Yes	Yes	Yes	Yes
Wheels	550/60-22.5	550/60-22.5	550/60-22.5	550/60-22.5
Suspension	Axle & Drawbar	Axle & Drawbar	Axle & Drawbar	Axle & Drawbar
Auto-Filling Arm	Standard Front Mount	Standard Front Mount	Standard Front Mount	Standard Front Mount
Applicator Type	RainWave™	RainWave™	RainWave™	RainWave™
Min Tractor requirements	100hp	120hp	140hp	160hp
Tare weight	4,260kg	5,060kg	5,860kg	6,160kg





# NEVADA TRIDEM AXLE SLURRY TANKERS



Trusted for  
Safety & Reliability™



2 Year  
Warranty

If you're looking for something larger than 16,500L a tridem is the way to go!

With so many more advantages for carrying the weight, tridem axle slurry tankers 18,000L+ are by far the most cost effective option. Ideal for contractors or if you've got large or multiple farms, tridem axle tankers with duo RainWave™ provide fast application for large loads.

Tractors above 200hp will have no trouble pulling these slurry tankers. Steering axles ensure they're very maneuverable, and with six wheels on the ground there's a lot less ground pressure, making them suitable on flat and gentle rolling land.

Model	MB180	MB200	MB220	MB250	MB300	MB340	MB370
Tank Size	18,250L	20,150L	22,200L	25,000L	30,800L	34,400L	37,000L
Length	8.8m	8.8m	9.2m	9.2m	9.6m	10.4m	10.4m
Pump	16,000L/min	16,000L/min	18,000L/min	18,000L/min	18,000L/min	18,000L/min	18,000L/min
Axle Type	Triple	Triple	Triple	Triple	Triple	Triple	Triple
Steering Axle	Two	Two	Two	Two	Two	Two	Two
Wheels	550/60-22.5	550/60-22.5	550/60-22.5	560/60-22.5	600/55-26.5	600/55-26.5	710/50-26.5
Suspension	Axle & Drawbar	Axle & Drawbar	Axle & Drawbar	Axle & Drawbar	Axle & Drawbar	Axle & Drawbar	Axle & Drawbar
Auto-Filling Arm	Standard Front Mount	Standard Front Mount	Standard Front Mount	Standard Front Mount	Standard Front Mount	Standard Front Mount	Standard Front Mount
Applicator Type	Duo RainWave™	Duo RainWave™	Duo RainWave™	Duo RainWave™	Duo RainWave™	Duo RainWave™	Duo RainWave™
Min Tractor requirements	200hp + Hydraulics	200hp + Hydraulics	220hp + Hydraulics	250hp + Hydraulics	300hp + Hydraulics	340hp + Hydraulics	370hp + Hydraulics
Tare Weight	8,440kg	8,640kg	9,640kg	10,440kg	11,140kg	12,040kg	12,540kg

Looking for something bigger? Give us a call today...

# STANDARD FEATURES

## FRONT VIEW

### Internal Baffles

To prevent fluid surges.



### Galvanised Tank

High durability, high anti-corrosion, damage protection inside and outside the tank

### Huge Siphon Container

For vacuum pump protection

### Filling Arm

High capacity 8in Auto-Fill. Easily adapted to fill from left or right side (takes only minutes to change)

### Auto-Fill Retainer Clamp

For extra durability



### Large flotation tyres

For safety on rolling terrain and reduced soil compaction. Longer-lasting, high resistance to puncture. Different sizes available on request

### Swivel Tow Hitch

Reduces jarring over uneven terrain and added safety in case of tanker tipping sideways. Scharmuller ball and spoon also available

### Pond Filling Station

With large 0.5m funnel for quick alignment. Rubber for flexibility and ultimate suction



### Heavy Duty Italian Vacuum Pump

For high capacity loading and discharge



### Tank Bolted to Full-Length Chassis

To increase durability





# STANDARD FEATURES

## REAR VIEW



**Tank Sight Glass**  
For easy viewing of effluent level



**Steel Implosion Rings**  
Built into tank for increased durability

**Pressure/Vacuum Gauge**  
For easy visual control

**Large Rear Hatch**  
For easy access and cleaning



**RainWave™**  
Achieves a wider spread.



**Quick-Attach Suction Hose Coupler**

**Hydraulic Parking Jack**  
For quick and easy hitching

**LED Tail Lights**  
For on-road use

**Pre-Tensioned Drawbar Suspension**  
For smoother travelling



**Heavy Duty ADR Hydraulic Brakes**  
Brakes on every wheel



**Hydraulic Steering**  
(Tandem and Tridem axle option)  
improves cornering with heavy loads



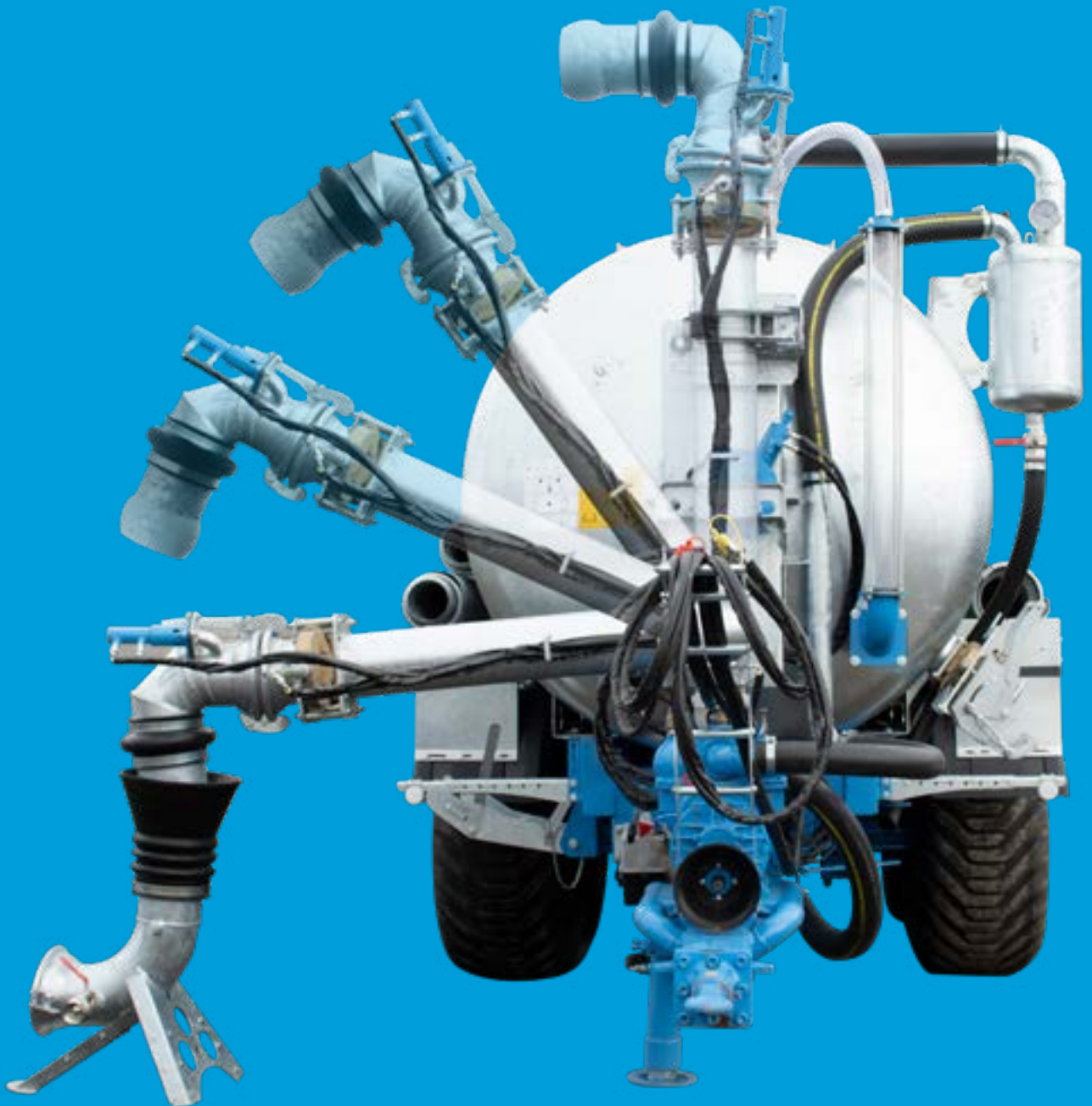
**High Quality ADR Suspension System**  
(Tandem and Tridem axle models) reduces jolts and impacts travelling through to the tank. Hydraulic or Air suspension also available. Providing greater stability and operator safety.

# LARGE 8" AUTO-FILLING ARM AS STANDARD

Standard on 10,000L and larger tankers, filling up your slurry tanker is a breeze with the addition of the Nevada Ezi-load system.

It can be operated from the comfort of the tractor seat - all you have to do is align the auto-filling arm with the large pond-side filling station, and drop it in.

Loading time depends on the size of the slurry tanker and pump capacity, but the Ezi-load will typically take only a few minutes to completely fill the tank. The arm is then lifted (again from the tractor seat) and the slurry tanker is ready to begin spreading to the desired location. We call this the Stop, Drop and Go system!







Pictured: Large 8" Auto-Filling Arm with loading accelerator in action on a Nevada 37,000L Tridem Slurry Tanker

## NON - STANDARD OPTIONS



### Side Loading Arm

Side loading arms are best for contractors and farms with multiple storage ponds, giving you the ability to pull up and suck from the pond without the need for a hose and easel. Telescopic arms extend, giving you an extra 1m. Available in 8" (200mm) or 10" (250mm).



### Loading Accelerators

Hydraulically driven pumps attached to the loading arm which force fluid into the tank, increasing suction speed and reducing filling time. Recommended on larger models.



### Dorsal boom

Or double jointed filling arm is ideal for reaching into above ground tanks or out to ponds to suck up without the need for a hose and easel. Size: 8" (200mm).



# NEVADA RAINWAVE™

Nevada slurry tankers come with RainWave™ applicators as a standard feature.

RainWave™ nutrient spreaders use low pressure combined with an oscillating fan pattern to achieve a wider, more controlled spread. Larger droplets mean virtually no wind drift, allowing effluent nutrients to be spread evenly. Single and tandem axle tankers have a single RainWave™ (duo optional), and tridem tankers come with duo RainWaves™.

## Benefits

- Gentle low-pressure rain pattern
- High volume (100m<sup>3</sup>/h-200m<sup>3</sup>/h)
- Self-drive oscillating swiveling mechanism
- Ideal alternative to dropper booms
- Large droplet size, so very minimal wind drift
- Safe tractor speeds (less than 7km/h)
- Very even spread pattern
- Better nutrient use
- Less pasture damage
- Better for the environment
- Low application depth (1-10mm)
- Handles thick slurry (up to 20% solids)
- Low maintenance







# NEVADA TRAILING SHOE

Accurate placement while minimising odour, wind drift, and evaporation. Teamed up with a Nevada Tandem 14,700L Slurry Tanker, this Trailing Shoe ensures unparalleled precision, delivering essential nutrients precisely where they are needed.

Thus minimising odour and evaporation. Effluent is placed directly to the soil (base of the plant) there is virtually no volitisation, wind drift, and no crop spoiling.

The Nevada Trailing Shoe assembly has a 8.6m working width and is ideal for farmers or contractors spreading up to 5,000,000 L/yr.

### Features

- OPTICUT PROFI
- Rear lights
- Hydraulic clamping
- Manual width adjustment (with ball valve)
- Manual tramline shut-off (with ball valve)
- Electric control panel SMART CONTROLLER for hydraulic control

### Specs

Working width	8.6m
Number of distribution hoses	40
Diameter of hoses	38mm
Number of cutting heads	1
System opening / closing time	15s/18s
System safety clamping	hydraulic
Weight	750kg



# NEVADA RAINGUN

If you're looking to spread over crops and hills as well as your standard paddocks, a RainGun may be just the thing.

Yes, you really can do it all with one machine!

RainGun's can be fitted to the top of any of the Nevada slurry tanker. Using a Garda pump, RainGun's spread up to 70m, allowing you to spread over areas where you cannot, or do not want to drive through. These could be hills that can't be reached, crop paddocks or over tracks.

For spreading over more standard areas simply use the standard RainWave™ applicator. It's easy to switch from the Garda pump to the slurry tanker's standard heavy-duty vacuum pump with the touch of a button.







# DISC INJECTOR UNIT

Want something with almost no odour, zero wind drift and no nitrogen loss? A disc injector may be your best bet.

As the name suggests, disc injectors inject effluent directly into the soil. Not only will you benefit from next to no smell, volatilisation or wind drift, but the cows can return to grazing almost immediately.

Available in 6.4m or 7.2m working widths, disc injectors are larger, heavier units, requiring hydraulics and significant skill to operate.

In some areas, injecting directly into the soil can run the risk of leeching. For this reason, we generally only recommend disc injectors when it is necessary to inject directly into soil.

## Other Options



### Spreader Plate

These are available upon request, however inverted or not, they are generally not recommended.







# DRAG HOSE SYSTEMS

Drop pond levels fast and turn brown into gold with Nevada's RainWave™ or Trailing Shoe umbilical drag hose system!

Say goodbye to lost nutrients and wasted money on artificial fertilisers. Nevada's drag hose systems allow you to spread those effluent nutrients more effectively, ensuring more nutrients reach the ground and reducing nitrogen being released into the atmosphere.

Economical and efficient, our drag hose systems will have you spreading further, fully utilising the nutritional value of your effluent and reducing storage levels in no time.

With custom options to fit your specific needs and the ability to apply 1,500,000L+ per day with ease, it's time to upgrade your effluent spreading game. Equipment can be purchased individually or as part of a package deal.

*Pictured: Nevada RainWave™ 3PL and Layflat Drag Hose on a 3000-head Dairy Farm in Northland, NZ*





*Everything you need for the*  
**ULTIMATE DRAG HOSE SYSTEM**



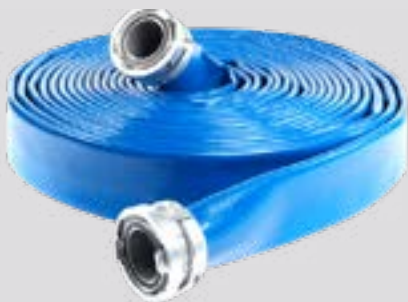
**Effluent Pump**

Choose from a range of top performing, high capacity PTO or diesel powered effluent pumps to suit your pumping requirements. Pumps suitable for small farms through to large farm and contractors! See page 40-41.



**Hose Reelers**

Heavy duty 3 point linkage (3PL) random wrap and segmented hose reelers are available. See page 19.



**Layflat Drag Hose**

Top quality PU and rubber lay flat hose is puncture resistant and stands up to rugged farm use. See page 16.



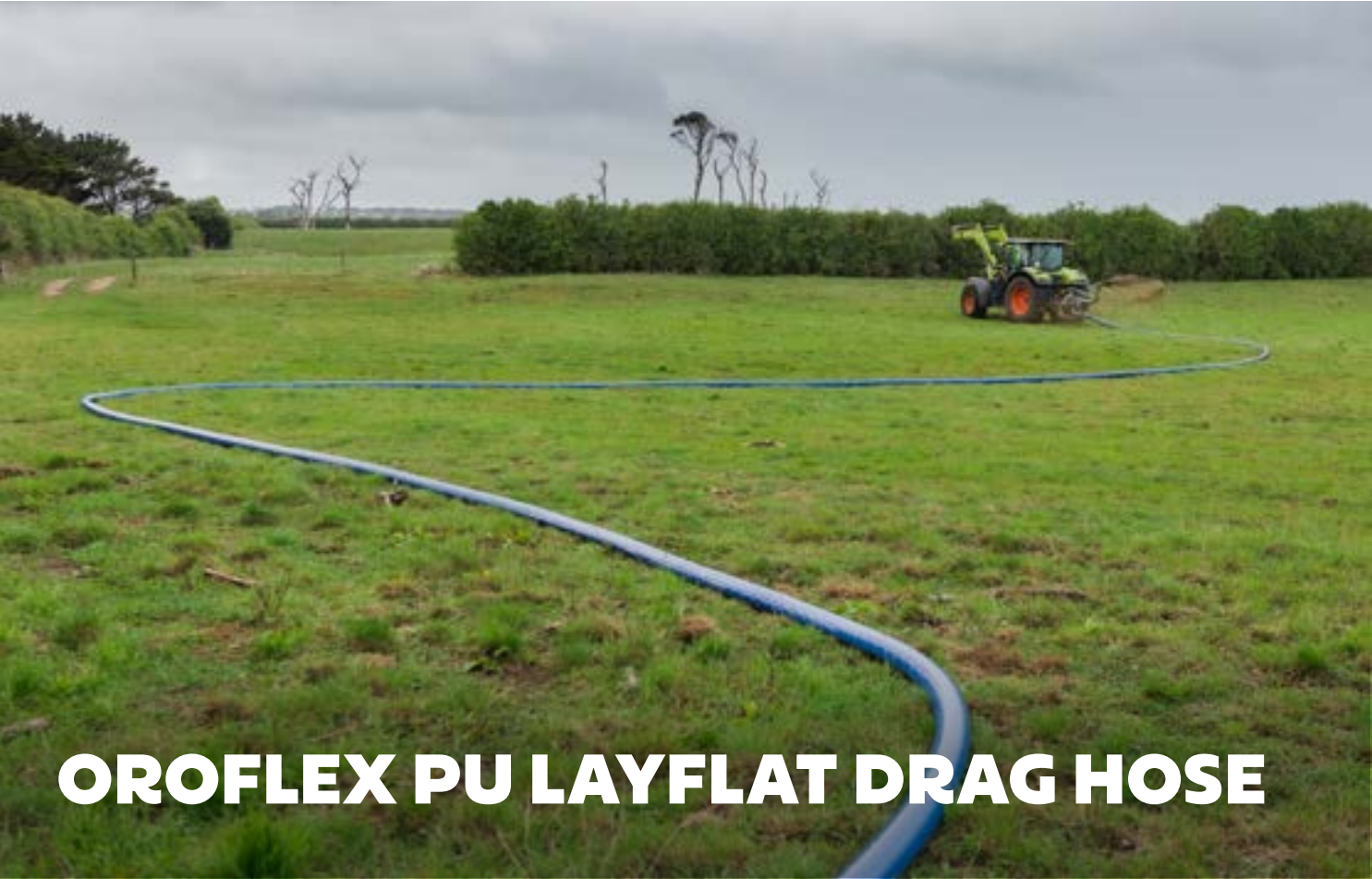
**Spreading Applicators**

Choose from a Nevada 3 point linkage RainWave™ applicator, or Trailing Shoe to suit your needs. See pages 17-18.



**OPTIONAL EXTRA**  
**Remote Valve Switch**

The remote valve switch lets you switch between one irrigation line to another (or bypass back to the pond) without turning off the pump. See page 37.



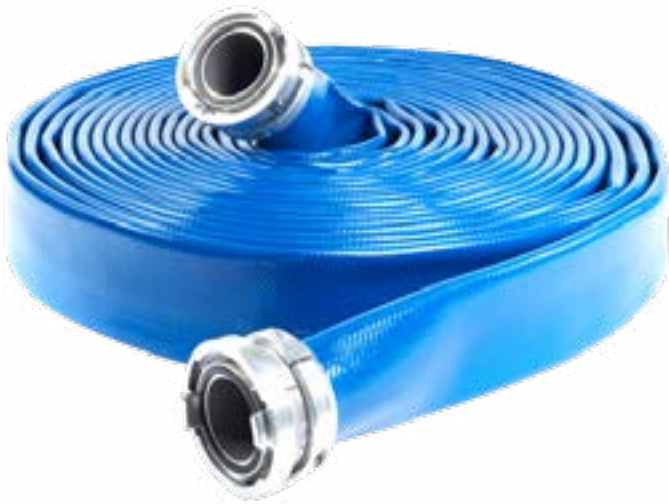
# OROFLEX PU LAYFLAT DRAG HOSE

Manufactured in Europe for agricultural and harsh industrial environments. Normally used as a drag hose on umbilical irrigation systems – offers outstanding abrasion resistance, chemical/hydrocarbon resistant and huge torsional strength for dragging. Standard hose length: 200m.

## Features

Top quality PU and rubber lay flat hose is puncture resistant and stands up to rugged farm use.

- 102, 127 and 152mm diameter
- 3.3mm-4.0mm wall thickness
- 17bar max working pressure (250 PSI)
- 42bar burst pressure (610 PSI)
- 13.8t-17.9t tensile strength
- 5yr manufacturers warranty



CODE	OUTSIDE DIAMETRE	WALL THICKNESS	WORKING PRESSURE	BURST PRESSURE	TENSILE STRENGTH	NOMINAL WEIGHT	BEND RADIUS AT WP
HOSHO130 BLACK RUBBER	3" (76mm)	2.30mm	175psi	460psi	5,300Kg	0.68kg/m	1.45m
HOSHO226	4" (102mm)	3.50mm	245psi	605psi	13,100kg	1.30kg/m	1.75m
HOSHO229	5" (127mm)	3.70mm	200psi	505psi	18,000kg	1.70kg/m	1.90m
HOSHO221	6" (152mm)	3.80mm	175psi	435psi	25,000kg	2.05kg/m	2.00m





# RAINWAVE™ 3PL APPLICATOR

The Nevada RainWave™ applicator has been developed as a good overall effluent spreading solution, providing speed, control, an even spread pattern, wide spreading distribution and producing larger effluent droplets that minimise wind drift and volitisation.

The 3 point linkage system is also very light on the tractor, making it an excellent choice over softer soils. If you're looking to empty and spread your effluent pond fast with a low application depth, the RainWave™ applicator is your best bet with the ability to spread over 1,500,000L in one day.

The simplicity of the RainWave™ makes it a very economical option, and the compact design means there's no issues with getting through farm gates or spreading over hilly or uneven ground. They're also really easy to operate.

## Benefits Of A RainWave™

- Easy for staff to operate
- Wide spread
- Large droplet size, so very minimal wind drift
- Better nutrient use
- Gentle low-pressure rain pattern
- Better for the environment
- Less pasture damage
- Low application depth (1-10mm)
- Safe tractor speeds (less than 7km/h)
- High volume (100m³/h - 200m³/h)
- Very even spread pattern
- Low maintenance
- Handles thick slurry (up to 20% solids)







# TRAILING SHOES

Effluent trailing shoes provide ultimate accuracy in proof-of-placement.

As well as greatly reducing odour and evaporation. There are many benefits when using a trailing shoe – with effluent being placed directly to the soil (base of the plant) there is virtually no volitisation, or wind drift, and no crop spoiling.

The Nevada Trailing Shoe assemblies come in four widths; 6.0m, 7.5m, 9.0m, 10.5m, and 12.0m. These trailing shoes are for Tractor Driven spreading.

## Features

- OPTICUT PROFI
- Rear lights
- Hydraulic clamping
- Manual width adjustment (with ball valve)
- Manual tramline shut-off (with ball valve)
- Electric control panel SMART CONTROLLER for hydraulic control



Models	6.0	7.5	9.0	10.5	12.0
Working width	6m	7.5m	9m	10.5m	12m
Number of distribution hoses	24 or 30	24 or 30	30 or 36	35 or 42	40
Diameter of hoses	38mm	38mm	38mm	38mm	38mm
Number of cutting heads	1	1	1	1	1
System opening / closing time	12s/16s	12s/16s	12s/16s	17s/19s	17s/19s
System safety clamping	hydraulic	hydraulic	hydraulic	hydraulic	hydraulic
Weight	520kg	600kg	680kg	730kg	780kg





# HOSE REELERS

Nevada's hose reelers have been developed and perfected after many years of contracting to provide the optimum solution combining heavy duty strength and ease of use.

Both random wrap and segmented mounted umbilical hose reelers are available, and all are fitted with a heavy duty, 3 point linkage and a female Quick fit 'A' frame. When the male 'A' frame is located it is secured by two loose fitting pins.

## LRB 800 Hose Reeler

The 600m version has a detachable spool which is easily and quickly removed from the heavy duty and robust carrying frame by removing two securing pins, lowering the reel to the ground and moving away. One frame can serve several spools. The spool is rotated by a heavy duty motor and gear drive powered hydraulically from the tractor, giving a positive and controlled recovery and laying out of the hose with no over-run. A large trough in the centre of the spool is used for easy loading of drag hose and couplings.

- Holds 800m of 3", 600m of 4", or 500m of 5" layflat hose
- Random wrap
- Double hydraulic drive
- Removable spools
- Ideal for medium size systems
- optional hose guide available

## Segmented Hose Reelers

Heavy Duty Segmented Hose Reelers are available in capacities of 1000m, 1200m, and 1400m.

With galvanised reels hydraulically operated from both tractor and reeler to allow controlled recovery and laying out with no over-run. Each segment holds 200m of 4" or 5" drag hose.

## TS 1000 Hose Reeler

The 1000m version has all the features of the 600m and in addition, has twin hydraulic drive to give increased power to hose recovery which allows longer lengths of drag hose to be recovered at any one time. This reeler can comfortably hold up to either 1000m of 4" hose, 800m of 5" hose, 600m of 6" hose or a mixture, when using the easily attached partitions.

- Holds 1000m of 4", 800m of 5", or 600m of 6" layflat hose
- Front or rear mounted
- Random wrap
- Double hydraulic drive
- Removable spools





# NEVADA STIRRERS



Pictured: Electric Stirrer ELZ9.

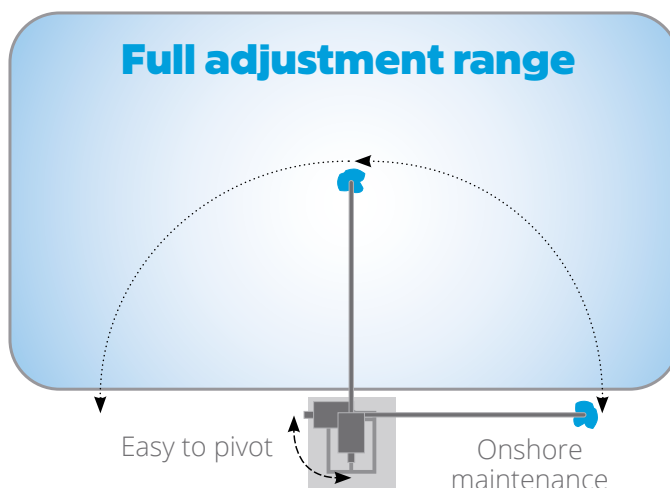


# ELECTRIC SHORE-MOUNT VS PTO TRACTOR-MOUNT

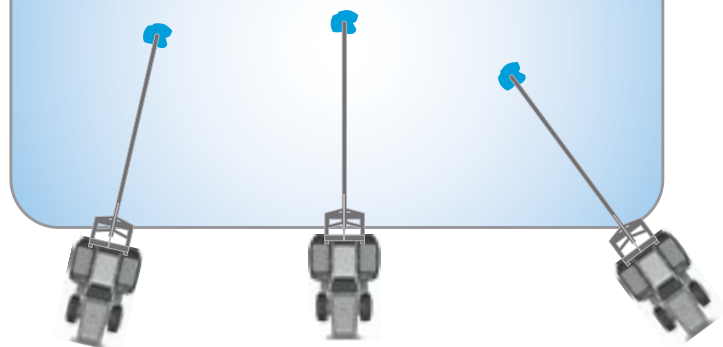
The Nevada Electric and PTO pond stirrers are both excellent solutions. They both have strong galvanised frames, durable slide bearings and Nevada's powerful Typhoon™ propeller technology. However, the two mount systems provide certain advantages that will suit different pond situations or farmer preference.

## Electric

- Shore-mount for safety and convenience
- Set and forget. Stirrer can be left running on a timer
- Turn-key operation with complete FDE system
- Low power requirements
- Quiet operation
- Good for daily/semi-daily use to maintain slurry

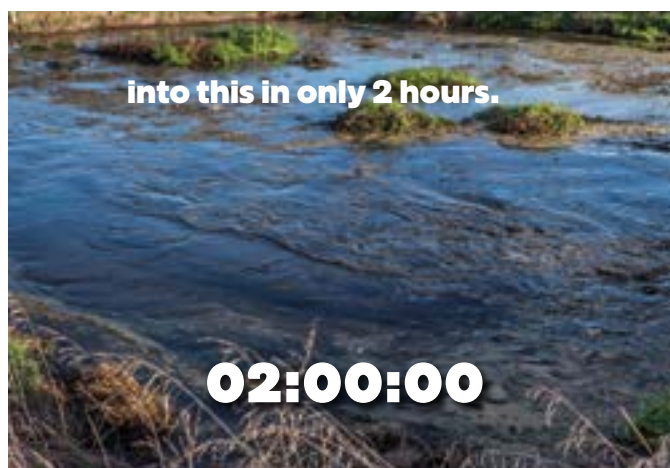
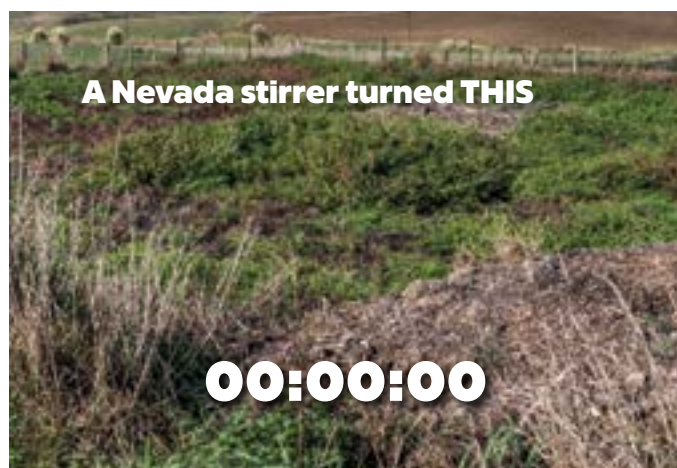


## Easy to reposition for optimal placement



## PTO

- Mount for mobility and maneuverability
- Can be inserted into pond from different positions
- Multiple ponds (contractors)
- Low power requirements/low tractor revs
- Good for ponds with extreme crust and vegetation





**2 Year  
Warranty**



**Trusted for  
Safety & Reliability**



# NEVADA ELECTRIC STIRRERS

Built with a sturdy base that allows for easy angle adjustment and 360° rotation to ensure optimum placement in the pond, all maintenance can be safely carried out onshore.

## Options to suit your style

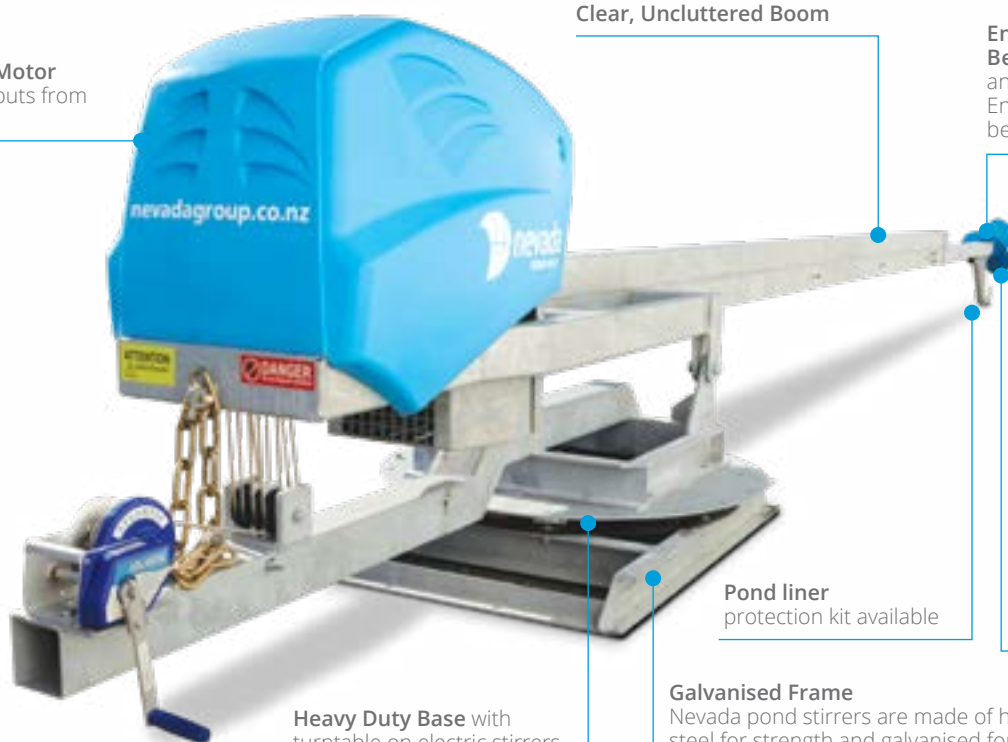
There are eight electric stirrer models available to suit most dairy effluent ponds, with power output ranging from 10-25hp.

While even the smallest model will get an entire average sized pond swirling, the larger models are powerful enough to handle larger ponds in excess of 10,000,000L.

**Powerful Motor**  
Power outputs from 10-30hp

**Clear, Uncluttered Boom**

**Enduro Block Hardwood Bearings** for reduced wear and easy replacement. Ensures no sensitive rolling bearings enter the pond



**Nevada Typhoon™ 3-blade Propellor** achieves a higher mixing performance than pumps or submerged motors with the same use of energy

**Pond liner protection kit available**

**Heavy Duty Base with turntable on electric stirrers**

**Galvanised Frame**  
Nevada pond stirrers are made of high-grade steel for strength and galvanised for durability



# NEVADA EL7 ELECTRIC STIRRERS

The 7m EL range of stirrers is ideal for shallow ponds and any slope.



With power output ranging from 10-20HP, even the smallest model will get an entire average sized pond swirling.

With a long 7.0m boom for excellent pond coverage, the EL710 is powerful enough to suit medium size effluent ponds. Easy angle adjustment from the shore-mounted base (Up and Down adjustment) and simple to pivot (Side to Side rotation) for optimum coverage. Reinforced slide bearing keeps shaft turning in tough mixing conditions for a rapid and extremely efficient mixing performance.

Model	EL710	EL715	EL720
Power	10hp	15hp	20hp
Length	7m	7m	7m
Galvanised	Yes	Yes	Yes
Bearings	Enduro Block	Enduro Block	Enduro Block
Propellor	Typhoon™	Typhoon™	Typhoon™

# NEVADA ELZ9 ELECTRIC STIRRERS

The 9m ELZ range of stirrers have an ultra heavy-duty slew ring base and are ideal for big ponds and gentle slopes.

The base allows for easy angle adjustment and 360° rotation to ensure optimum placement in the pond, and all maintenance can be safely carried out on shore.

The 9m range is powerful enough to handle larger ponds upto 10,000,000L.

Model	ELZ910	ELZ915	ELZ920	ELZ925
Power	10hp	15hp	20hp	25hp
Length	9m	9m	9m	9m
Galvanised	Yes	Yes	Yes	Yes
Bearings	Enduro Block	Enduro Block	Enduro Block	Enduro Block
Propellor	Typhoon™	Typhoon™	Typhoon™	Typhoon™





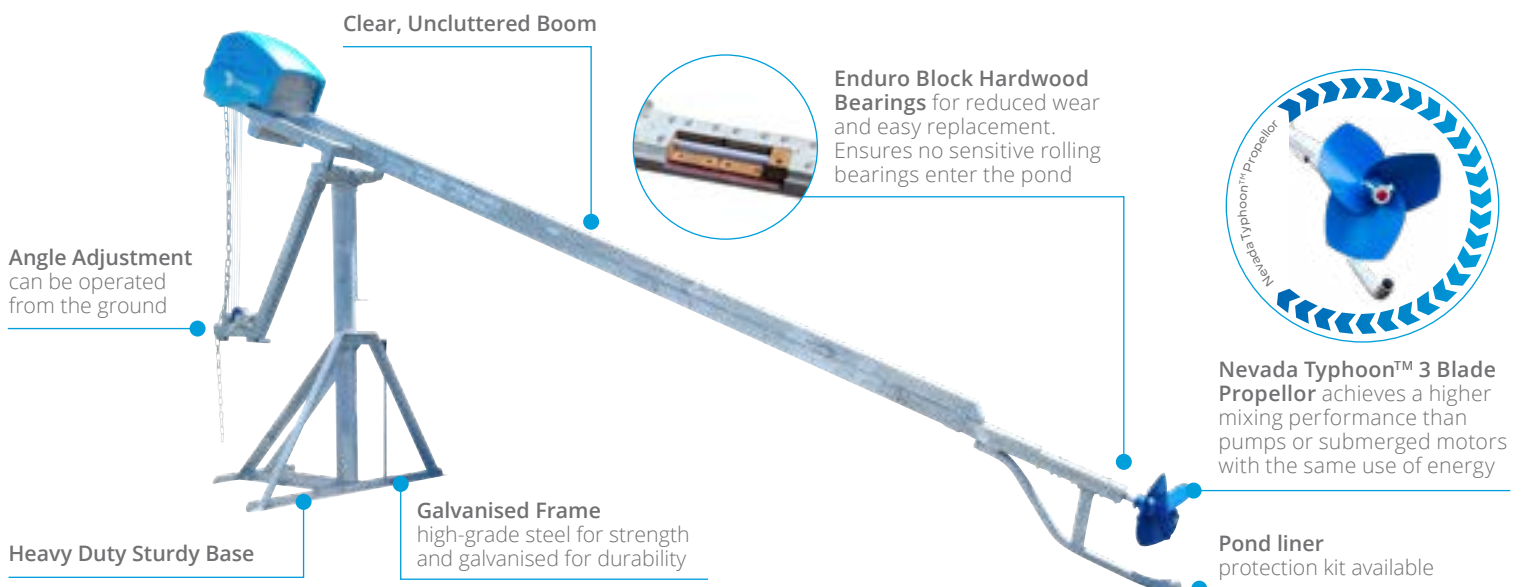
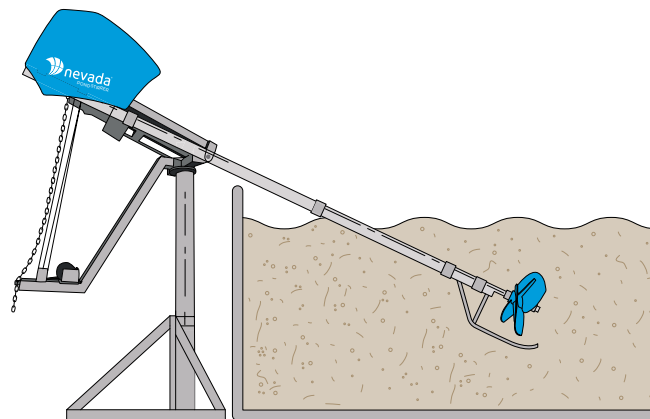
Over-the-wall horizontal stirring is the ultimate option for above ground effluent tanks because it is the most effective.

A more thorough stir is achieved because the stirrer can be positioned far enough into the tank and angled for the best flow. This allows the stirrer to easily break up crust from the top (should you have any) as well as bringing sediment from the bottom into rotation.

There are two options for electric over-the-wall slurry stirrers. Both options utilise Nevada's top performing electric stirrers with the ability to reach over the wall of your tank.

### TankStir 710

The latest method for over-the-wall electric stirring is having an electric stirrer with an extended mast that reaches over the wall of the tank. This is more cost effective than a pedestal while also being more convenient as it is operated from the ground.







### Pedestal Mounted Over-Wall Stirrer

The more traditional method for electric stirring over-the-wall of an above ground tank. Your Nevada electric stirrer is simply mounted on a pedestal to reach into the tank. (Pictured above)

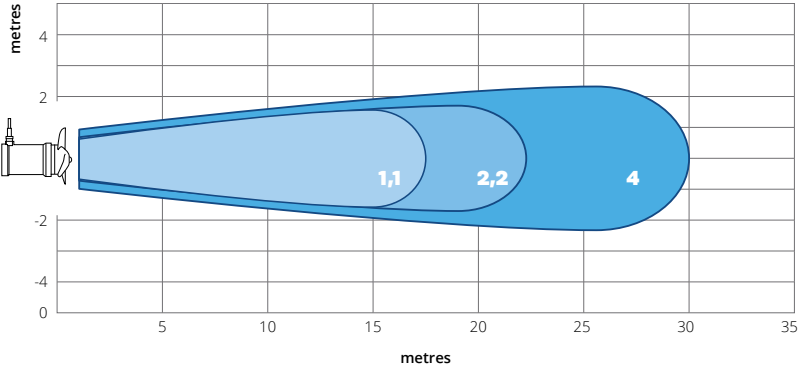
### Submersible Mixers

Mixes the solids together with liquids so an even consistency is sucked through your pump.

- Prevents crusting
- Prevents sludge build-up
- Mounting system custom made for your tank/sump
- Thermal protection
- 10 metres of electrical cable



Performance Diagram for 1.1-4Kw Submersible Mixers





# KING

## of Pond Stirrers

Nevada's tractor-mounted PTO pond stirrers are the best stirrers money can buy. They offer great value to you by maintaining the capacity of your pond, so you have, in effect, more effluent to spread, and they also improve the quality of effluent, so your effluent is dense with nutrients.

This high performance and efficiency has a lot to do with our Typhoon™ propellers. The angle, size and placement of the blades have been carefully designed and calculated to maximise efficiency. The blades can move up to 10,000,000 litres using less energy and the nutrients within the slurry are evenly distributed throughout the mixture, creating better fert for your soil.

As they are shore-based with a tractor-mount, they are much easier to move and maintain, making them safer and more efficient. A lot of farm debris gets washed into the effluent, which can be very hard on equipment. That's why we opted for our oil impregnated Enduro Block Hardwood Bearings, which are self-lubricating, abrasive and corrosion-resistant.



The KING of Pond Stirrers, ideal for contractors and large ponds

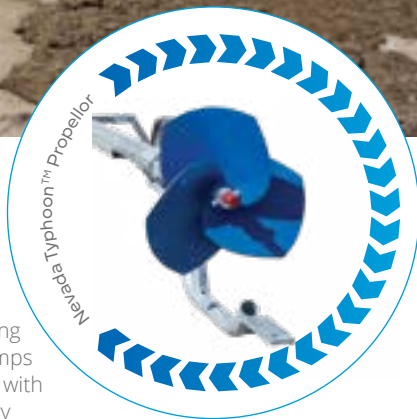
Model	<b>TurboStir™ 7000</b>
Length	7.8m
Adjust	Hydraulic
Galvanised	Yes
Bearings	Enduro Block
Propeller	Extra Large Typhoon™
Min Tractor Requirements	140hp







**Enduro Block  
Hardwood Bearings**  
Tough, oil-impregnated  
hardwood that is resistant to  
both abrasions and corrosion.



**Nevada Typhoon™  
3 Blade Propellor**  
acheives a higher mixing  
performance than pumps  
or submerged motors with  
the same use of energy



Ideal for medium to large ponds

Model	<b>TurboStir™ 6000</b>
Length	6.8m
Adjust	Hydraulic
Galvanised	Yes
Bearings	Enduro Block
Propeller	Large Typhoon™
Min Tractor Requirements	90hp



Ideal for small to medium ponds

Model	<b>TurboStir™ 5000</b>
Length	5.8m
Adjust	Hydraulic
Galvanised	Yes
Bearings	Enduro Block
Propeller	Medium Typhoon™
Min Tractor Requirements	75hp

# OTHER CONFIGURATIONS

## Hydraulic drive

PTO Stirrers can be adapted to attach to a front end loader, telehandler or digger boom for versatility in different effluent storage situations. By eliminating the driveshaft, it allows the PTO to go steeper, ideal for if you need to reach up and over a tank, or other hard to reach situations.



## Stirrer Extension 2000 and 4000

### Got a large pond, or just want to reach further?

The Stirrer Extension 2000 provides an extra pivot point for accessing some of the more difficult or larger ponds to provide superior mixing.

The most common uses are for higher wall ponds or above ground ponds that need a longer reach.

- Easily attached and removed as needed
- Length - 2m



## Optional Extras



### High Efficiency Shredder

High efficiency shredder for mulching vegetation.



### Pond Liner Kit

Optional propellor protection ring and tyre attachment for lined ponds.



### Wheel Kit

Optional wheel kit for added maneuverability.



# IRRIGATORS





# NEVADA FERTIGATOR™

The Fertigator™ is a portable effluent irrigation solution, manufactured in New Zealand especially for local farming conditions.

Spreading effluent straight from the pond or sump, you can say goodbye to common irrigator issues like run-off, ponding, and groundwater contamination. Simply connect with your pump and drag hose, and away you go!

Hook up the optional tow kit to your farm bike or tractor and the Fertigators™ are easily movable, making them perfect for any size farm. With a wide 700mm diameter base for stability, the Fertigator™ will glide over both flat land and steeper areas without toppling over, and will always maintain consistent spread.

## Features

- Low application rate.
- 10mm, 12mm, or 14mm nozzles minimise blockages.
- Gun constructed from metal, not plastic.
- 50m of drag hose between units (not included).
- Up to 1500m<sup>2</sup> coverage (at 45psi).
- Common 2 inch camlock fittings.
- Can be used with both small and large pumps.
- Wide 700mm diameter base for stability.
- Optional tow kit available (for towing with the farm bike, pictured below)

Nevada Fertigators™ suit both small and large pumps, and can be used in conjunction with a traveling irrigator if required. With 10mm, 12mm, or 14mm nozzles, blockages are minimised, allowing you to get the job done more efficiently. What's more, the gun is made from metal, not plastic, for long term reliability.







The following tables provide a guide to Fertigator™ application rates<sup>1</sup>.

Nozzle (mm)	Pressure (psi)	Flowrate (L/min)	Wetting Ø (m)	Coverage (m <sup>2</sup> )
14mm	25	156	33.4	876
	30	171	36.5	1046
	35	180	39.3	1213
	40	184	41.8	1372
	45	188	43.9	1513
12mm	25	108	31.6	784
	30	120	34.6	940
	35	130	37.2	1086
	40	138	39.5	1225
	45	142	41.4	1346
10mm	25	75	28.0	615
	30	84	30.1	711
	35	91	32.0	804
	40	96	33.7	892
	45	100	35.2	973

<sup>1</sup> As tested by an independent dairy effluent consultant. Actual rates may vary, depending on the system and conditions.

# GREENBACK SPIDER TRAVELLING IRRIGATOR

Increase your pasture production by capitalising on your farm's available resources with the Greenback Spider Travelling Irrigator.

A simple speed change procedure with a choice of five travel speeds allows greater control of effluent application depths thus allowing greater control of soil absorption rates optimising the benefits of the natural fertiliser.

## Overview

- Proven design for reliability and simplicity
- Travel distance up to 400 metres
- Distribution uniformity of less than 1.25
- Maximum Volume 90 cubic metres per hour
- Differently angled arms allow for a more even spread pattern of between 30 to 50 metres depending on pump pressure
- Suitable for electric and PTO pumps
- Application depth from 5mm to 35mm
- 5 travel speeds

## Specifications

<b>Travel Distance</b>	250-400m
<b>Spreading Width</b>	30-50m
<b>Boom Width</b>	9.0m
<b>Min Pressure</b>	2bar
<b>Max Pressure</b>	6bar
<b>Max Draghose</b>	90mm od
<b>Flow rate</b>	19,625 - 30,120 L/hr



Pressure at Irrigators with 13mm nozzles

30psi			40psi		50psi		
	Average Application Depth	Travel Speed Metres/Minutes	Average Application Depth	Travel Speed Metres/Minutes	Average Application Depth	Travel Speed Metres/Minutes	
Teeth taken per revolution	2	35	0.30m/min	36	0.40m/min	39	0.40m/min
	4	17	0.60m/min	18	0.75m/min	20	0.80m/min
	6	13	1.05m/min	14	1.10m/min	25	1.20m/min
	8	9	1.60m/min	9	1.65m/min	10	1.60m/min
	10	5	2.00m/min	5	2.10m/min	6	2.20m/min
Approx. Flowrate: 19,625L/Hr Wetted Diameter: 34m			Approx. Flowrate: 25,755L/Hr Wetted Diameter: 38m		Approx. Flowrate: 30,120L/Hr Wetted Diameter: 42m		

\* Results from testing with assistance from Massey University. These tests have been done using liquid from an effluent pond to give the most accurate results possible. This information should only be used as a guideline.



# GREENBACK MAGNUM TRAVELLING/STATIONARY IRRIGATOR

The Nevada spec'd Magnum is a powerful irrigator, incorporating a traditional travelling irrigator, with added value of the power of the powerful rain gun. Plus can also work as a stationary rain gun.

With a wetted width more than twice as wide as a traditional travelling irrigator, the Magnum offers application rates and depths competitive with sprinkler systems.

## Overview

- Can achieve average application rates of 10.0mm/hr and application depths as low as 3mm/pass
- Labour requirement significantly reduced
- Capable of operating at pressures and flows provided by traditional effluent pumps
- Option of 300 or 400m Wire Rope
- Irrigate effluent in a single nutrient rich state without the need for expensive separation systems
- A simple concept that is proven to be robust and reliable
- Wetted widths up 90 metres, twice that of a standard traveling irrigator
- Nevada spec'd Magnum, can also work as a stationary rain gun



## Specifications

<b>Travel Distance</b>	250-400m
<b>Spreading Width</b>	45-90m
<b>Boom Width</b>	8.5m
<b>Min Pressure</b>	2bar
<b>Max Pressure</b>	6bar
<b>Max Draghose</b>	90mm od
<b>Flow rate</b>	17,640 - 51,360 L/hr

The following tables provide a guide to Magnum application rates<sup>1</sup>.

Pressure at irrigator (PSI)	Irrigator Nozzle (mm)	Synkro Nozzle (mm)	Flow Irrigator (l/min)	Flow Synkro (l/min)	Flow Total (l/min)	Radius (m)	Avg App Rate (mm/hour)	App Depth (mm)
30	13 Hard	14	120	174	294	25.5	8.64	2.16
44	13 Hard	14	152	212	364	30	7.72	1.60
58	13 Hard	14	169	245	414	34	7.05	1.59
30	13 Hard	16	120	226	346	27	9.06	1.73
44	13 Hard	16	152	276	428	32	7.98	1.74
58	13 Hard	16	169	320	489	36	7.21	1.72
73	13 Hard	16	180	356	536	39	6.73	1.71
30	13 Hard	18	120	286	406	29	9.22	1.86
44	13 Hard	18	152	350	502	34	8.29	1.90
58	13 Hard	18	169	404	573	38	7.58	1.89
73	13 Hard	18	180	452	632	42	6.84	1.84
30	13 Hard	20	120	354	474	31	9.42	2.01
44	13 Hard	20	152	432	584	36	8.61	2.06
58	13 Hard	20	169	501	670	40	8.00	2.07
73	13 Hard	20	180	560	740	44	7.30	2.03
44	13 Hard	22	152	522	674	37	9.40	2.30
58	13 Hard	22	169	604	773	42.5	8.17	2.21
73	13 Hard	22	180	676	856	45	8.07	2.28

<sup>1</sup> These tests have been conducted using liquid from an effluent pond to give the most accurate results possible. This information should only be used as a guideline.

# SPIDER DELUXE TRAVELLING IRRIGATOR

The Spider Deluxe Irrigator is designed to operate with a 2800rpm 7.5hp - 15hp effluent pump which suits most average sized farms.

The Deluxe is a proven travelling irrigator with 1000+ worldwide. Available in a choice of Stainless Steel or Galvanised wire rope and options in lengths of 250 or 300m.

## Overview

- Simple trouble free design
- Rewind handle
- Double lipped neoprene seals
- Quick action pawls
- Hardened steel wire guide
- 4 travel speeds
- Total enclosed main bearings
- Stainless steel spindle
- Low centre of gravity
- Light but strong
- Totally hot-dipped galvanized
- Suitable for irrigation
- Towing hitch
- Operates with lay flat and hard hoses
- Progressive cam for low power requirement for travelling
- Supplied with the camlock fitting for supply hose

## Specifications

<b>Travel distance</b>	250-300m
<b>Spreading width</b>	20-35m
<b>Boom Width</b>	8.5m
<b>Min pressure</b>	2bar
<b>Max pressure</b>	6bar
<b>Max draghose</b>	75mm od
<b>Flow rate</b>	15,750 - 25,755 L/hr



30psi				40psi		50psi	
	Average Application Depth	Travel Speed Metres/Minutes		Average Application Depth	Travel Speed Metres/Minutes	Average Application Depth	Travel Speed Metres/Minutes
Teeth taken per revolution	2	24	0.60m/min	24	0.53m/min	26	0.70m/min
	4	12	1.20m/min	12	1.10m/min	13	1.30m/min
	6	9	1.60m/min	8	1.80m/min	9	2.00m/min
	8	6	2.00m/min	5	2.15m/min	7	2.40m/min
Approx. Flowrate: 15750L/Hr Wetted Diameter: 25m				Approx. Flowrate: 19625L/Hr Wetted Diameter: 28m		Approx. Flowrate: 25755L/Hr Wetted Diameter: 34m	

\* Results from testing with assistance from Massey University. These tests have been done using liquid from an effluent pond to give the most accurate results possible. This information should only be used as a guideline.



# SKID-MOUNTED RAIN GUN

Nevada's simple skid-mounted Rain Gun is a popular choice when needing to pump large volumes quickly, handling up to 170,000L /hr.

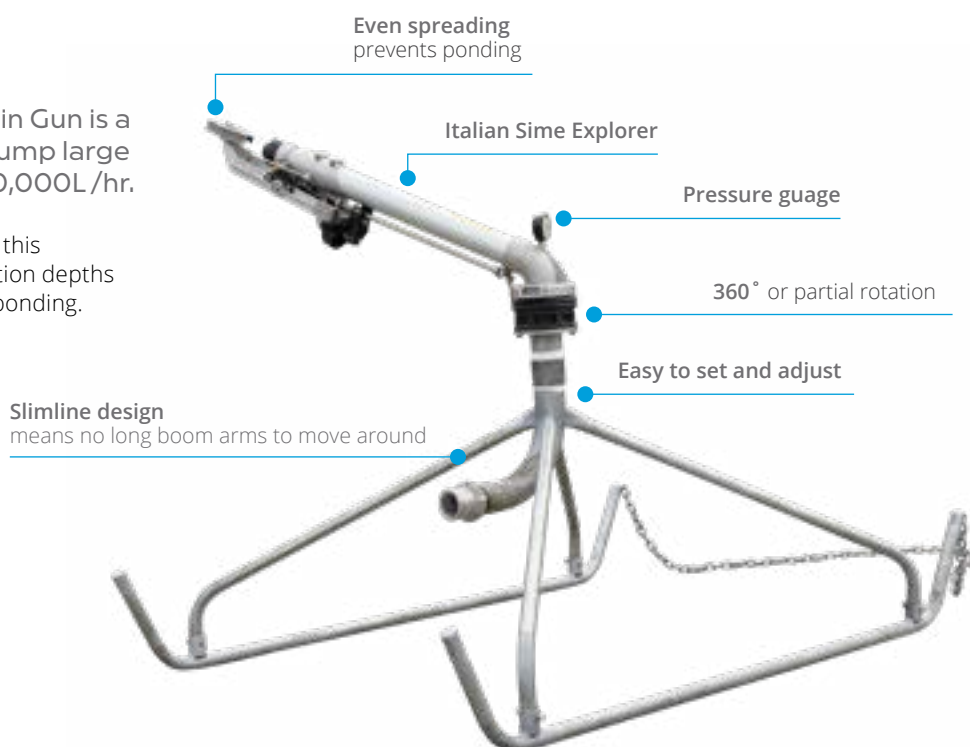
Ideal for poor draining soils or sloping land, this stationary rain gun can provide low application depths and rates to reduce the risk of run-off and ponding.

## Features

- Ability to set partial arches
- Even spreading prevents ponding
- Easy to set and adjust
- Slimline design means no long boom arms to move around
- 360° or partial rotation
- Nozzle sizes: 32, 34, 36, 38 and 40mm

## Specifications

<b>Spreading width</b>	40-78m
<b>Min pressure</b>	3bar
<b>Max pressure</b>	7.9bar
<b>Max draghose</b>	76-150mm od
<b>Flow rate</b>	30,000 - 156,000 L/hr



# COBRA TRAVELLING RAIN GUN

Spread over large distances while achieving a low application depth. The Cobra allows targeted directional irrigation ideal for hillsides.

## Features

- Low application depth, apply as low as 1.3mm
- 6 travel speeds - can also be used stationary
- Compact design
- Proven and unique drive unit
- Strong and rugged construction
- Wheels protected within the frame
- Fully galvanised frame
- Designed to handle most terrain
- Drum can take up to 400m of synthetic rope
- Wheels and drum have bearings, not nylon bushes
- East to tow with a standard tow ball coupling
- NZ designed and manufactured

## Specifications

<b>Travel distance</b>	400m
<b>Spreading width</b>	23-48m
<b>Min pressure</b>	2bar
<b>Max pressure</b>	4.8bar
<b>Max draghose</b>	75mm od
<b>Flow rate</b>	9,000 - 44,000 L/hr





# HYDRANTS AND PIPES

Trust Nevada to keep things moving smoothly.

Our hydrants are designed and engineered to withstand the rigours of New Zealand's dairying conditions. They are solidly constructed and durable, providing virtually maintenance free ownership. Our versatile range of hydrants will complement any hydrant system to help ensure superior performance – together with the reliability that comes with all Nevada products.

## Features

- Smooth bends
- Fully hot dip galvanised
- Robust construction
- Simple operation
- Range of sizes
- Suits Alkathene or PVC pipes
- Minimal pressure loss



Nevada End of Line Hydrants



Nevada 2 Way Hydrants



Nevada 3 Way Hydrants



S Hydrants



MDPE Mainline Joiner



MDPE Mainline



PVC Pipe





# IN-LINE EFFLUENT FILTERS

In-Line Effluent Filters are designed to eliminate debris that create blockages in irrigation nozzles.

Liquid flows through the screen inside the filters body. It is a simple procedure to open the top of the filter, remove the filtering screen, discard the trapped debris, replace the cleaned screen and reassemble the filter. This feature makes the cleaning process a simple and tidy operation.

## Features

- 76 hose/64 BSP inlet and outlet
- Overcentre lid catches for quick opening
- Bleed valve for auto draining of filter
- NZ designed and manufactured
- Neat and tidy, simple to use
- Cost effective and built to last



	Galvanised Large	Galvanised Medium	Galvanised Small	Stainless Steel Small
Size	10x12mm	12x6mm	4mm	3mm
Hole Shape	Diamond	Diamond	Round	Round

# REMOTE VALVE SWITCH

The remote valve switch lets you switch between one irrigation line to another (or bypass back to the pond) without turning off the pump. This is made possible with use of a soft close switching system eliminating any potential pressure spikes. It's so simple – just activate it from your mobile phone!

## Features

- 75mm Y Valve
- Powered by a 12V battery
- Free app download for IOS and Android phones
- No internet connection required
- Remote valve switch can be controlled by multiple mobile devices
- Allows one person to operate a drag hose system
- New Zealand made



# STRUCTURED PAYMENT PLANS

## **Invest in your farm's future with our hassle-free payment options.**

Trade-ins, credit sales and more! Investing in an effluent management system can be a big decision. That's why we offer a variety of finance options to help make the process as flexible and hassle-free as possible.

### **Trade-ins**

If you're looking to upgrade your old machinery, how about trading it in? You can trade-in your old machinery and put its value towards the purchase of new equipment. Our experienced sales team can work with you to determine the value of your trade-in and help you find the perfect replacement for your farm.

### **Credit Sale**

For a quick and easy purchase option, a credit sale might be the best choice for you. It offers many of the same benefits as a capital investment, but without the same upfront commitment. Our team can help set up a regular payment over an agreed period with a competitive interest rate structured to suit your cash flow needs.

### **Lease to Own with No Deposit**

A 'Lease to Own with No Deposit' allows you to acquire ownership of the machinery without making a large upfront payment. Your first payment is due upon delivery, and there's no need to pay GST upfront. Instead, the GST is spread across the monthly and residual value payments.

At the beginning of the term, a pre-determined residual value is agreed upon. As the lessee, you have several options prior to the end of the term, including:

- Paying the residual value in cash to own the machinery
- Trading in the machinery
- Selling it privately and repaying the residual; or
- Requesting a further refinance option.

This financing option offers tax benefits such as depreciation and interest expense, which should be confirmed with your accountant.

We also offer a seasonal structure option where you can choose to pay for 6 months on and 6 months off.

### **Leasing**

Leasing to own can be a great option for those looking for a flexible purchase option. By making set monthly payments, it can be easier on cash flow and can help attribute the cost of ownership to the business.

Additionally, leasing allows you to avoid making a large capital investment into a depreciating asset. At the end of your leasing period, you even have the option to purchase the asset. Our experienced finance team can work with you to determine the best lease structure for your business and make the process as easy as possible.

### **Hire**

Hiring machinery can also be a low-risk, hassle-free option for those who have a short-term requirement or are looking to trial a machine. Nevada's hire machinery includes slurry tankers and PTO stirrers.

### **Indent Pricing**

Nevada can sometimes offer special indent pricing on pre-ordered machinery. A deposit will be required to secure the machine. This allows you to lock in a price, guarantee the availability of a machine for you, and provide protection against price rises. The downside to this is you will not have your machine immediately, and there is always a risk of delays out of our control.

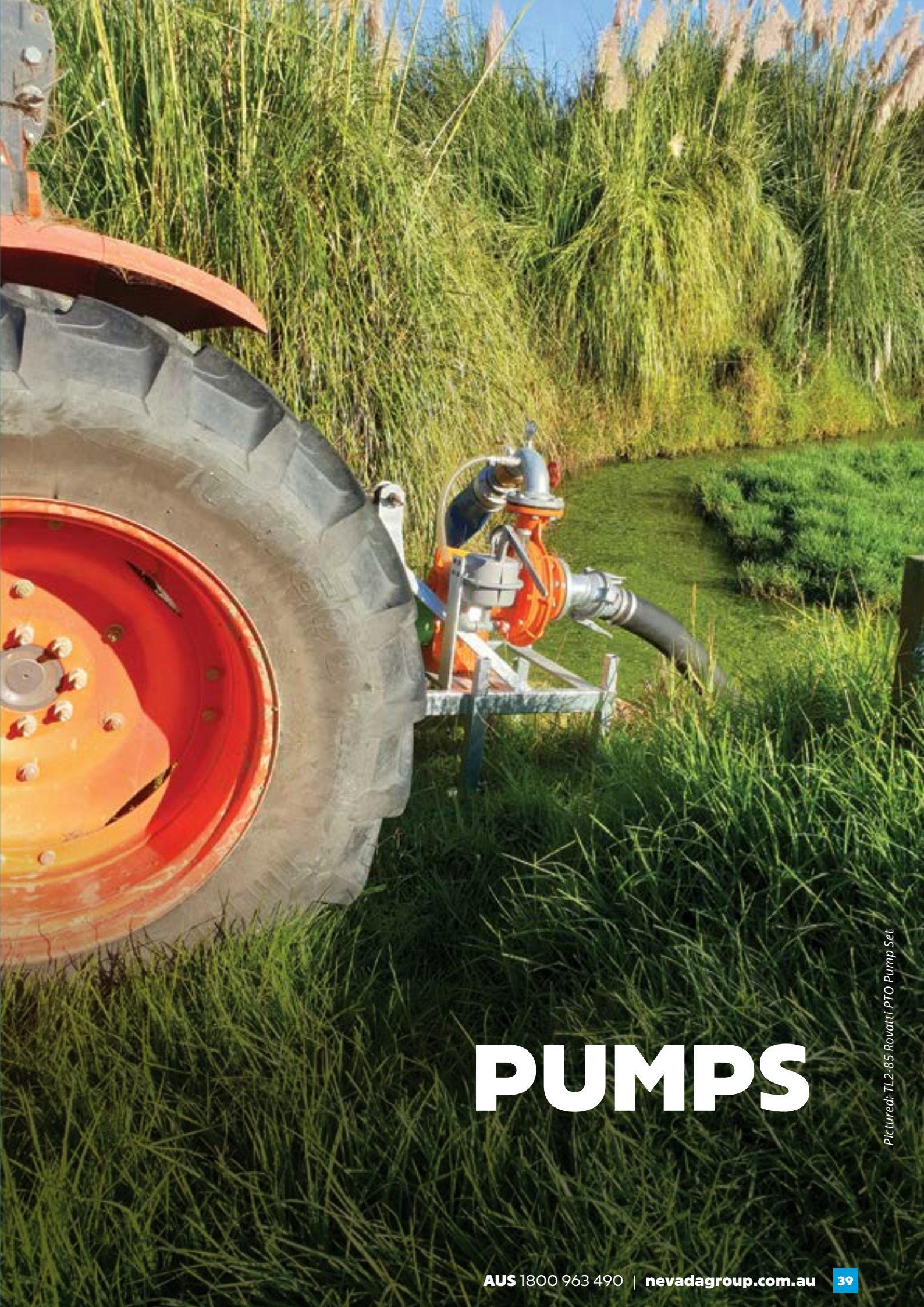
### **Capital Purchase**

Making a capital purchase is the most cost-efficient option if your business has surplus cash. By purchasing the machinery outright, you'll own it instantly and have full control over all aspects of your new asset. This can be an attractive option for a farm with capital expenditure.

**Give us a call to discuss payment options**

**0800 464 393**





# PUMPS

*Pictured: TL2-85 Rovatti PTO Pump Set*





# PTO PUMPS

Perfect for contractors and farmers without electricity at the pump site, our effluent pumps are powered by your tractor for unbeatable mobility.

Ideal for high capacity effluent pumping or multiple pump sites, and equipped to handle even the toughest conditions, our PTO pumps are a must-have as a backup in case of power failures or pump breakdowns.

With maximum pumping performance, Nevada's range of high-capacity PTO pumps are made from hard-face lubricated mechanical steel.

## Bauer Magnum SX1000 Pump Set

With a massive capacity, the Bauer Magnum SX1000 pump set is perfect for contractors & large farms.

- Efficient and economical
- Low operating costs
- Easy maintenance
- Can handle up to 12% solids
- Capacity of up to 300m³/h

Model	SX1000
Flow	30-300m³/h
Pressure	40-160H(m)
Tractor Requirements	150+hp
Mounting Options	Standard: 3 point linkage Option: Trailer mount





## TL2-85 Rovatti PTO Pump Set

- Capacity: Up to 100,000L/hr
- 5m suction hose with strainer
- Drive shaft
- Hard-face lubricated mechanical steel



## TL3-80 Rovatti PTO Pump Set

- Capacity: Up to 150,000L/hr
- 5m suction hose with strainer
- Drive shaft
- Hard-face lubricated mechanical steel



## TL3K-80 Rovatti PTO Pump Set

- Capacity: Up to 150,000L/hr
- 5m suction hose with strainer
- With chopper for heavy solids
- Drive shaft
- Hard-face lubricated mechanical steel

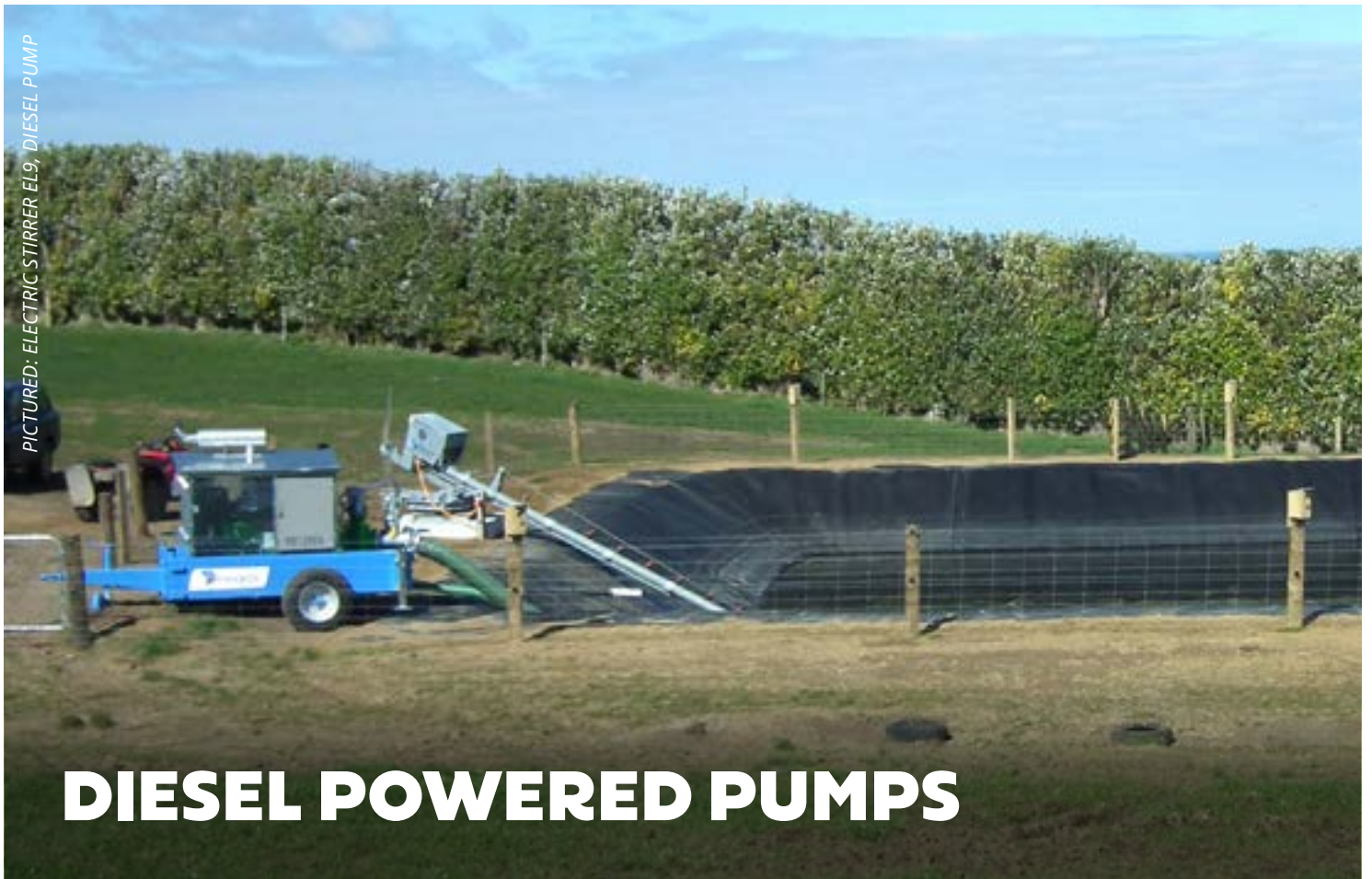


## TL4K-125 Rovatti PTO Pump Set

- Capacity: Up to 220,000L/hr
- 5m suction hose with strainer
- With chopper for heavy solids
- Drive shaft
- Hard-face lubricated mechanical steel



Model	TL2-85	TL3-80	TL3K-80	TL4K-125
Flow	10-100m <sup>3</sup> /h	20-150m <sup>3</sup> /h	20-150m <sup>3</sup> /h	20-220m <sup>3</sup> /h
Pressure	50-75H(m)	90-110H(m)	90-105H(m)	90-110H(m)
Tractor Requirements	40-80hp	40-90hp	50-100hp	60-130hp
Mounting Options	Standard: 3 point linkage Option: Trailer mount			



# DIESEL POWERED PUMPS

Nevada's Diesel-Powered Effluent Pumps are the ultimate pumping solution. With a shredder on the intake port, these pumps easily handle tough effluent. The in-built engine protection, lockable canopy, LED lights, and working light make these pumps both safe and practical for any job.

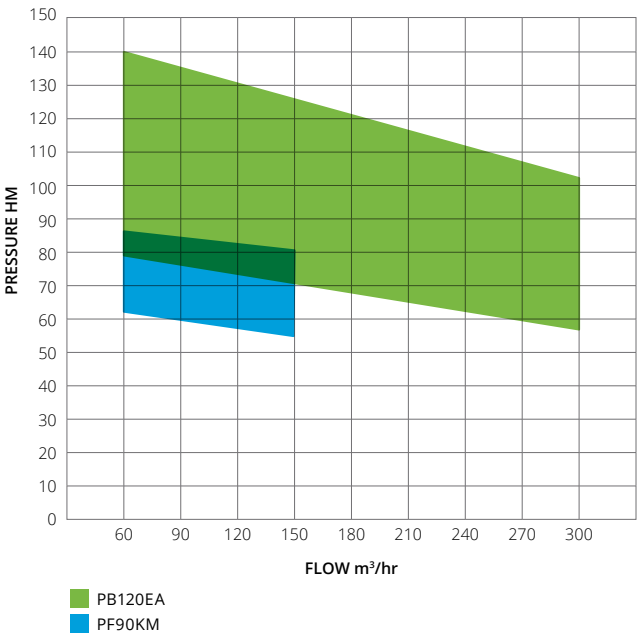
Perfect for contractors and large effluent irrigation systems, these high capacity effluent pumps offer a semi-permanent solution when there's no tractor or electricity available. And with a range of sizes and options, including auto-priming and remote control, you can find the perfect pump for your specific needs.

Get the job done with ease and confidence with Nevada's Diesel-Powered Effluent Pumps!

### Optional Extras

- Auto priming (standard on PB120EA)
- Remote control via SMS or cell phone app
- Sound-proof canopy
- Lifting arm for suction line
- Chopper or non-chopper options
- Trailer or skid-mounted

### Pressure and Capacity Ranges





# NEVADA DIESEL PUMP



Models	PF90KM	PB120EA
Power	126hp (93kW) John Deere or Iveco	170hp (127kW) John Deere or Iveco
Engine	4 Cylinder	6 Cylinder
Flow	Up to 150m³/hr	Up to 300m³/hr
Pressure	Up to 90m(H)	Up to 130m(H)
Fuel Tank	400L	600L

*\*Alternative hp and design configurations available by request.*



# PROGRESSIVE CAVITY (PC) PUMPS

Nevada's heavy-duty progressive cavity (PC) pump kits are built to handle dairy effluent irrigation and proven as the best on the market. With high pumping efficiency and reduced operating costs, you'll be saving time and money in no time.

A robust construction ensures fewer repairs and less up-keep, making our PC pumps the low-maintenance solution for your effluent system. Complete and ready to install, each unit includes:

- Galvanised head works
- Intelligent controller unit
- Suction hose and base mount ready to be mounted to concrete
- Outlet pipe connection

**Cast iron body** with hard plated stainless steel shaft and rotor  
Nitrile starter for long life

**No high tension bending shaft**, with quality sealed universal joints for smooth operation

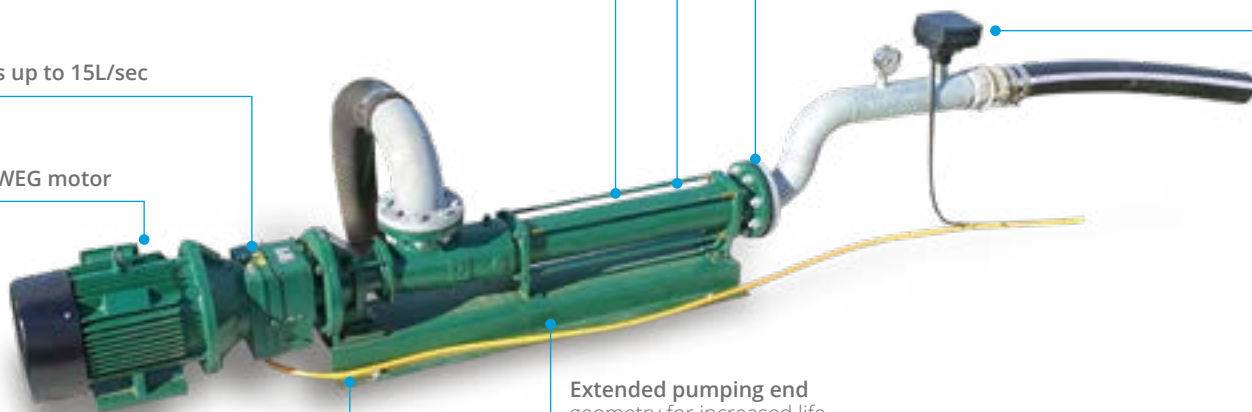
**Self-priming**, non-clogging operation with high suction lift capabilities

Pumps up to 15L/sec

Quality WEG motor

**Extended pumping end geometry** for increased life

**Heavy duty bearings** for peace of mind







Nevada PC Pumps are all fitted with an **Intelligent Pump Controller**. Equipped with advanced sensors, this controller swiftly detects and responds to blockages and run-dry events, shutting the pump down immediately and automatically, preventing damage to the pump.

The other great feature with these controllers is their ability to be coupled with the auto shut-off valve on your irrigator. When the irrigator gets to the end of its run, the shut off valve closes and the controller shuts the pump down automatically, this prevents the irrigator spinning at the end of the run on the spot and also avoids ponding.



## Features

- Model options ranging from 3-15kW (4-20HP)
- Duty capacity up to 15L/sec and maximum pressure of 11bar (160psi)
- Suitable for shore-mounting applications with end-suction lift up to 6m
- Ideal for screened or settled effluent with soft solids
- Constant flow rate for even application
- Robust construction and low running speed

## Benefits

- Versatile and suitable for various effluent management systems
- High efficiency with low power requirements
- Even application with constant flow rate
- Long and reliable service thanks to robust construction and low running speed
- Low maintenance and reduced operating costs

Model	1860	1890	2690	3690	29100
Flow	18m <sup>3</sup> /h	18m <sup>3</sup> /h	26m <sup>3</sup> /h	36m <sup>3</sup> /h	29m <sup>3</sup> /h
Pressure	60m(H)	90m(H)	90m(H)	90m(H)	100m(H)
Power Requirements	5.5kW	7.5kW	11kW	15kW	15kW
Flange Size	80mm	100mm	100mm	125mm	125mm
Solids (Hard/Soft)	9.5/38mm	12/48mm	12/48mm	15/60mm	15/60mm



# OTHER ELECTRIC PUMP OPTIONS

## Floating Centrifugal Pumps

These high pressure pumps will suit your irrigation needs. High flow and low pressure options provide effective solutions for effluent transfer and feeding solids separators.

Flow	5m <sup>3</sup> /h-60m <sup>3</sup> /h
Pressure	45-65m(H)
Power requirements	7.5kw-18.6kw
Application	PondBoom™



## Submersible Effluent Pumps

Great for transferring effluent and feeding solids separators. Submersible pumps are also an excellent option for pumping from small sumps like underpass storage.

Flow	12m <sup>3</sup> /h-60m <sup>3</sup> /h
Pressure	8-16m(H)
Power requirements	0.75kW-3.7kW
Application	Tank mount sliding frame available







# NEVADA PONDBOOM™

## Nevada 7m PondBoom™

If you've got a shallow pond or steep slopes the 7m PondBoom™ is for you!

The PB700 incorporates a sturdy winch so you'll have no need to walk out onto the pond for retrieval and maintenance.

This makes the PondBoom™ a much more efficient, and safer system than traditional pontoons.



Model	PB700
Length	7m
Hose	Flat Hose
Galvanised	Yes
Winch	Easy
Drums	Corrosive resistant polyethylene
Pump	Yardmaster or Doda floating centrifugal pump

## Nevada 9m PondBoom™

Got big ponds or gentler slopes? The Nevada PB900 will get you where you need to be. It reaches further into the pond for a more effective pumping system.

The PB900 incorporates a sturdy winch so you'll have no need to walk out onto the pond for retrieval and maintenance.

This makes the PondBoom™ a much more efficient, and safer system than traditional pontoons.



Model	PB900
Length	9m
Hose	Flat Hose
Galvanised	Yes
Winch	Easy
Drums	Corrosive resistant polyethylene
Pump	Yardmaster or Doda floating centrifugal pump



# NEVADA FLOOD PUMPS

Don't let flooding wash away your farming dreams!  
Keep your crops and pasture high and dry with Nevada Flood Pumps!

Nevada flood pumps are the perfect solution for farmers and contractors who need fast and powerful water pumping capabilities. With easy deployment and no priming required, you'll be able to save pasture and crops in no time. The hydraulic outlet adjustment and 360° swivel allow you to pump in any direction, giving you the flexibility you need to get the job done right. And, with their smart European design and fully galvanised construction, you can trust your Nevada flood pump will last for years to come, protecting your investment and your livelihood.

### Features

- Pump 1-1,800 m³/h
- Easy to deploy - no priming required
- Hydraulic outlet adjustment for discharge
- 360° swivel to pump in any direction
- 3PL attachment

Order now and experience the peace of mind that comes with having the best flood pump available when you need it.



Model	350/SH	400/SH
Discharge Diameter	350mm	400mm
Length	5m	5m
Weight	640kg	700kg
Minimum hp Required	80hp	95hp
Volume	1,400,000L/h	1,800,000L/h

### Optional Extras

- Fluming can be added to extend the pump over stock banks
- Telescopic discharge tube and hydraulic swivel available on indent
- Larger options available on indent, however we've found the 350/5H & 400/5H models effective in most instances in New Zealand





*Pictured: Bladder Tank with a Brass Gate Valve*

# STORAGE





# NEVADA BLADDER TANKS

Nevada effluent bladder tanks are the ideal solution for all kinds of effluent storage needs, with a whopping capacity of up to 2,500,000L. Our bladders are specifically developed for effluent storage. They provide protection from algae, fungal growth and UV deterioration.

Bladder tanks are quick and easy to install, with minimal earthworks required. Our bladders are low maintenance, foldable, transportable, and even earthquake resistant. They're incredibly safe too - with no risk of people falling in. And to top it off, we offer a 10-year warranty to ensure your complete peace of mind.

Being totally enclosed, there's no external contamination, oxidation, or evaporation - and with gas vents included, you'll experience limited odours too. Plus, Nevada bladders come equipped with multiple mixing valves. You can wave goodbye to crusting issues while increasing your nutrient value!

Don't settle for subpar storage solutions - invest in our Effluent Bladder Tanks today and experience a top-quality product that delivers on all fronts!

### Benefits

- No oxidation, external contamination or evaporation
- Limited smell as tanks are totally enclosed (gas vents included)
- No crusting on top of effluent
- Storage capacity up to 2,500,000L
- Multiple valves to assist with stirring
- Quick and easy to install
- Low maintenance
- Fold-able and transportable
- Earthquake resistant
- Safe - no risk of people falling in
- 10 year warranty

More sizes available.

Model	300m <sup>3</sup>	500m <sup>3</sup>	800m <sup>3</sup>	1000m <sup>3</sup>	2000m <sup>3</sup>
Dimension Empty	13.32x17.47m	16.28x22.94m	19.24x30.2m	20.72x34.70m	35.52x39.23m
Max Height	1.6m	1.6m	1.6m	1.6m	1.6m
DN80 Overflow	3	4	10	10	10
Side DN80 Mixing Valves	5	5	10	14	16

MULTIPLE TANKS CAN BE PLACED INLINE FOR A LARGER STORAGE VOLUME





## Material & Performance

Nevada's high performance effluent bladder tanks are made from the finest technical fabrics that boast exceptional puncture resistance. Advanced technology allows us to provide superior quality, without compromise. The assembly process involves high frequency welding, ensuring our tanks are certified to ISO 9001 standards, giving you peace of mind that they are built to last.

The bladder's material is fortified with cutting-edge technology that drastically reduces penetration into coated fabrics, preventing any capillarity ruptures from forming. Composite textile membranes are engineered with a PES woven reinforcement that delivers unparalleled dimensional stability and outstanding resistance. Several high-performance polymer layers are added, providing exceptional resistance to stretching and an incredibly low shrinkage rate.

We take pride in our commitment to sustainable and practical storage solutions, ensuring that our bladder tanks meet and exceed your expectations.

## Advantages

- Very high mechanical quality
- Better resistance to acidic and basic effluents
- Specific design for flexible tanks
- Hydrophobic coating for higher durability
- Outstanding weight/resistance compromise
- Anti-UV and anti-fungal formulation
- Resistance to high and low temperatures

## Material Specifications

Coating type	PVC
Finish	Two-sided varnish
Material	PES
Thread	1100dtex
Weight	1300g/m <sup>2</sup> , ISO 3801
Frame breaking strength (warp/weft)	4000/3800N/50mm , NF EN ISO 1421 or DIN 53354
Temperature resistance range	-30/+70°C , EN 1876-2

*This technical information is for minimum medium values with a tolerance of +/- 10%.*





# CONCRETE SUMPS

Even though a sump has a much smaller volume, its still important to stir the effluent to minimise the build-up of solids. The ideal set-up for a concrete sump includes a Submersible Mixer for stirring, a Submersible Pump for transferring and PC Pump for irrigation. Save time by including a Sump Float Switch to automating the process.

## Sump Float Switch

The Nevada Sump Float Switch operates by automatically starting and stopping an effluent pump based on predetermined levels in the sump. An indicator positioned at the top of the sump pump switch allows operators to monitor the effluent level from a distance.

- Easy to install and set, with start stop heights using adjustable stopper rings.
- Sized to suit upto a 2.5m sump depth.
- Long lasting galvanised frame with stainless steel rod and fixings.



## Submersible Mixer - High Performance

Nevada's range of submersible stirrers are perfect for when shore-mount isn't an option. They're ideal to mix solids and liquids together for an even consistency for your pump.

- Prevents crusting and sludge build-up
- Mounting system custom made for your tank/sump
- Thermal protection
- 10 metres of electrical cable
- Made in Italy
- Size range: 1.1- 5.5kw



## Submersible Effluent Pumps

Great for transferring effluent and feeding solids separators. Submersible pumps are also an excellent option for pumping from small sumps like underpass storage.

Flow	12m³/h-60m³/h
Pressure	8-16m(H)
Power requirements	0.75kW-3.7kW
Application	Tank mount sliding frame available







# NEVADA YARD SCRAPER

Maintaining a clean and healthy environment for your cows is paramount, and that's where our new Nevada Yard Scraper comes into play.

The Nevada Yard Scraper is designed to efficiently scrape and collect dairy effluent from areas where cows congregate, such as milking sheds and holding yards. The waste can be pushed into your pond or a collection point such as a sandtrap, preventing runoff and protecting local waterways. This not only helps in meeting stringent environmental regulations but also promotes better cow health by reducing the risk of disease enhancing overall farm hygiene.



Scraping width of 2800mm

**Euro Hitch**  
for easy attachment to a tractor

**Unique Angled Profile**  
for efficient scraping



Fully galvanised

25mm thick heavy duty rubber squeegee



## EFFLUENT SOLID SEPARATORS

In certain situations, separating the solids from the liquid could be necessary.

Those situations could be so you can pump the liquid through a pivot irrigator or small pods. Another reason could be separating the solids so they can be spread onto a paddock prior to planting Maize.

### Options

- Horizontal screw press (pictured above)
- Static screen (pictured right)



*Static Screen Separator*

## DIY EFFLUENT NUTRIENT TESTING KIT

Imagine applying fertiliser without knowing the NPK.

Farmers have a valuable resource in the effluent pond, but often don't know it's value, and new government regulations are requiring farmers to record and manage nitrogen application more precisely.

### So here's a solution...

Nevada's DIY Nutrient Testing Kit is a simple, fast, on-farm method of measuring the nutrient value of your effluent, allowing you can make informed decisions so you can make better use of your resources, and remain compliant both now and in the future.

Knowing how much nitrogen is applied will become key to sustainable farming practices. Use the Nevada Nutrient Testing Kit to calculate the correct application rate for maximum crop growth.

This is a recommended tool for both dairy farmers and contractors.



### Content in the kit

- Laminated instructions
- pH adjuster
- Reagent
- Container with manometer
- Lid to the container
- Measuring tube
- Measuring scoop
- DM meter





# Nevada PondBugs™

Healthy effluent ponds. Healthy pasture. Making effluent ponds better. Keep your pond healthy, active and bursting with goodness!

Just one Power-Dose of PondBugs™ treatment initially, followed by the prescribed weekly dose will provide necessary bacteria to help keep your dairy effluent pond healthy, active and bursting with goodness - allowing you to add the highest value nutrients back onto your farm.

## Why PondBugs™?

- Helps reduce pond crusting
- Maintains pond capacity
- Improves the nutrient value of pond effluent
- Helps reduce odour
- Approved for use on organic farms
- Enables cows to graze pasture sooner
- Improves soil biological health
- Helps reduce greenhouse emissions

## Directions

Pour the required number of scoops of PondBugs™ with water through the drain that flows into the effluent pond. For best results wash the PondBugs™ through into the pond with plenty of water. Use the scoop provided and allow one scoop per 50 cows. After your treated, highly nutritional effluent is pumped onto pasture, more raw effluent will continue to be introduced to the pond. So, to keep your pond healthy you will need to maintain your weekly PondBugs™ prescription and keep the pond mixed.

## Application Rates

### Initial Power-Dose Complete bucket lot of PondBugs™.

Pour the complete bucket lot of PondBugs™ with water through the drain that flows into the effluent pond. For best results wash the PondBugs™ through into the pond with plenty of water and mix the pond well.

Weekly Prescription 1x scoop per 50 cows.

Number of cows	PondBugs™ Quantity
100	2x scoop per/week
200	4x scoop per/week
400	9x scoop per/week
750	15x scoop per/week





*NZ's Specialist provider of*

**DAIRY EFFLUENT EQUIPMENT**

**NZ 0800 464 393**

**[nevadagroup.co.nz](http://nevadagroup.co.nz)**

**AUS 1800 963 490**

**[nevadagroup.com.au](http://nevadagroup.com.au)**

 **nevada**<sup>®</sup>  
Sustainable Effluent Management