

FEED YOUR FARM

**SUPER EASY
FINANCE DEAL
1.99%**

Find out more pages 8-9



**The versatility of
bladder tanks**

Find out more page 4

**Can your pond stirrer
pay for itself?**

Find out more pages 11

**ON FARM
SUCCESS STORIES**

**Boost your silage
production**

Find out more page 2

NZ's specialist provider of
DAIRY EFFLUENT EQUIPMENT
0800 464 393 | nevadagroup.co.nz

 **nevada**[®]
Sustainable Effluent Management

FEED YOUR FARM

Welcome to the Winter edition

The weather might be cooling down, but the production of winter feed is hotting up. We have a chat with Scott Connell, whose slurry tanker has become his pride and joy. Your effluent is a fantastic resource, that ultimately makes you more milk by feeding your farm with nutrients. The trick is how to best exploit this free resource that you're producing every day.

In this issue, we look at:

- Creating silage with a slurry tanker
- No pond, no problem. Use a bladder tank
- How to get maximum value from a pond stirrer
- PLUS, some hot finance deals

If you see something you like or have specific questions about your farm and what would work best for your paddocks, then our team members are the best people to ask. Give them a call, and they'll be happy to help. They know the machinery inside out.



NZ's specialist provider of
**DAIRY EFFLUENT
EQUIPMENT**

Working a Slurry Tanker on Rolling Hills

Based in Dorriggo, NSW, Australia, Scott runs 200 Jersey cows across 215ha of rolling hills and pasture. His Nevada tanker has become his prized purchase, reducing his fertiliser cost by around 30-40%.

Creating silage

On Dorriggo Plateau there has been an unusual amount of rain this year, 68 inches (1,727mm) so far, so Scott takes every chance he can to feed the new growth of silage. His cows are fed mainly on grass and then silage for four or five months of the year. Right now, it is a change season when he'll switch from kikuyu to rye grass and oats, so he'll follow up the planting with slurry to get the nutrients back into the soil and give his new growth a kick-start.

Working on sloped ground

And even though there has been more rain than usual, once the sun comes out, his 10,000 litre slurry tanker has not had any issues with the rolling hills his farm sits on. Even though it is carrying 15 tonnes of effluent, he has not seen any damage to his paddocks or tracks. The softer ground did make it more difficult to get to the steeper parts of the paddocks until he learned to start spreading on the flat first and then move up the slope as the tank got lighter. What he really likes is that he can reach his whole farm without any worries. The RainWave™ applicator deposits heavy droplets onto the soil, so there is virtually no run off and minimal wind drift.



What's the expression? "Make hay while the sun shines," and that is exactly what Scott Connell is doing ...



Watch Video | www.nevadagroup.co.nz/on-farm-success-stories

ON FARM SUCCESS STORIES

"The old system could only be used on rectangular paddocks. Now we can weave and duck and do all sorts – it's a good fit for this farm."

Better coverage

Before he got the tanker, he had a traveller with 600 metres of mainline, which limited coverage to just 15% of the farm. It was messy and there were always blockages. With the tanker, he is now covering 70% of his farm and he reckons he has reduced his fertiliser cost by 30 to 40 per cent.

Plus, his old system could only be used on rectangular shaped paddocks, which wasn't a great fit for the topography of his farm. With the Nevada tanker, he can reach even the odd-shaped paddocks.

Scott came to Nevada because the standard machine had everything on it he wanted. The auto-fill feature and the fact that all four wheels are braked, sealed the deal. It was exactly what he needed for the rolling hills on his farm.

The Nevada auto-fill arm feature stood out for him. With the eight-inch suction, it takes him just three minutes to fill the tanker. He doesn't have to get out the cab, no mess, no problems, he just fills up, switches on a podcast and starts spreading.

The purchase process was easy too. Scott was worried that getting a machine from NZ would be a bit of a drama, but all it took was one phone call and eight weeks later it rocked up to his farm.

Advice, "Just get into it."

Scott thinks getting a Nevada tanker has been one of the best decisions he has ever made for his farm. It is not just the cost savings he's made, it's also simple and easy to use, as well as being fast and efficient. "I've had my wife and my teenage daughters use the machine, and they love it."

AT-A-GLANCE

Scott Connell

REGION
Dorrigo, NSW,
Australia



FARM SIZE
215ha



CONTOUR
Rolling to steep



COWS
200 Jersey



INPUTS
Grass & silage for
4-5mths/yr



EFFLUENT STORAGE
200,000L
Clay lined pond



PRODUCTS
• Nevada 10,000L
Tandem Slurry Tanker

Figures are approximate only.



Will a Bladder Tank Work For You?

What's the best set-up for effluent storage? That's a difficult question to answer because every farm is different. At Nevada, we've sold heaps of bladder tanks and storage ponds; we don't favour one over the other, it is all about what is right for your property. But let's have a look at the pros and cons.

Closed Effluent Storage Solution

If you are in a high rainfall area, this is a bit of a no-brainer. An open pond is a large catchment area, if you can close that off, you will reduce your storage needs. With a bladder tank, there is no chance of overflows from heavy rain, and your effluent will not be diluted from rainwater, so you can reduce your storage capacity.

Bladder tanks are also very popular in areas with a high-water table when it is difficult to dig an effluent pond. Soil type also plays a role because that affects your drainage, which directly affects your ability to irrigate. If you need to wait longer for the ground to dry out, you might need more storage, and that is when a bladder tank comes in handy.

Location, location, location

What kind of site do you have? Bladder tanks are very easy to set-up. You don't need any special consents, as bladder tanks are technically considered temporary storage, you just need a bit of flat land. A 22,000L bladder tank can be situated 10 metres from the cowshed, so you don't have to run power to it, saving you money there.

If you are collecting your effluent in a sump, many farmers will choose a bladder tank for their deferred storage. We'd situate the tank above the sump and pump the effluent into it and let gravity move it back to the sump when needed.





Versatility

One of the great features of a bladder tank is safety, you can't fall in. They are also friendlier to have around as there is much less odour, so they are easier to position if you are close to a road or have neighbours close by. Effluent stored in a bladder tank is more nutrient-rich as it will not be diluted by rainwater or lost to evaporation.

It is still important to keep the solution mixed, as it is much more difficult to remove a build up of solids from an enclosed tank than a pond.

Efficiency

There are lots of reasons to invest in a bladder tank for your storage, it is very efficient use of your space. The tipping point is size. As size requirements increase, an HDPE-lined pond tends to be more cost-effective, a bigger farm will get better value from a pond. Having said that, your initial outlay for a bladder tank might be higher, but the set-up cost is lower and at the end of the day, if you need to move, you can take your bladder tank with you.

Benefits

- No oxidation, external contamination or evaporation
- Limited smell as tanks are totally enclosed (gas vents included)
- No crusting on top of effluent
- Storage capacity up to 2,000m³
- Multiple valves to assist with stirring
- Quick and easy to install
- Low maintenance
- Foldable and transportable
- Earthquake resistant
- Safe - no risk of people falling in
- 10 year warranty
- Made in France

Material Specifications

Coating type	PVC
Finish	Two-sided varnish
Material	PES
Thread	1100dtex
Weight	1300g/m ² , ISO 3801
Frame breaking strength (warp/weft)	4000/3800N/50mm , NF EN ISO 1421 or DIN 53354
Temperature resistance range	-30/+70°C , EN 1876-2

This technical information is for minimum medium values with a tolerance of +/- 10%.

Model	300m ³	500m ³	800m ³	1000m ³	2000m ³
Dimension Empty	13.32x17.47m	16.28x22.94m	19.24x30.2m	20.72x34.70m	35.52x39.23m
Max Height	1.6m	1.6m	1.6m	1.6m	1.6m
DN80 Overflow	3	4	10	10	10
Side DN80 Mixing Valves	5	5	10	14	16

Other sizes available.

**MULTIPLE
TANKS CAN BE
PLACED IN LINE
FOR LARGER
STORAGE
VOLUME**

KING

of Pond Stirrers



Nevada's tractor-mounted PTO pond stirrers are the best stirrers money can buy. They offer great value to you by maintaining the capacity of your pond, so you have, in effect, more effluent to spread, and they also improve the quality of effluent, so your effluent is dense with nutrients.

This high performance and efficiency has a lot to do with our Typhoon™ propellers. The angle, size and placement of the blades have been carefully designed and calculated to maximise efficiency. The blades can move up to 10,000,000 litres using less energy and the nutrients within the slurry are evenly distributed throughout the mixture, creating better fert for your soil.

As they are shore-based with a tractor-mount, they are much easier to move and maintain, making them safer and more efficient. A lot of farm debris gets washed into the effluent, which can be very hard on equipment. That's why we opted for our oil impregnated Enduro Block Hardwood Bearings, which are self-lubricating, abrasive and corrosion-resistant.



Nevada TurboStir™ 5000

Ideal for small to medium ponds

Length	5.8m
Adjust	Hydraulic
Galvanised	Yes
Bearings	Enduro Block
Propeller	Medium Typhoon™
Min Tractor Requirements	75hp

ONLY
\$9,490_{+gst}

MOST POPULAR

Nevada TurboStir™ 6000

Ideal for medium to large ponds

Length	6.8m
Adjust	Hydraulic
Galvanised	Yes
Bearings	Enduro Block
Propeller	Large Typhoon™
Min Tractor Requirements	90hp



ONLY
\$9,990_{+gst}

10%
DEPOSIT
0%
INTEREST
ONLY
\$450^{*}
PER MONTH

Nevada TurboStir™ 7000

The KING of Pond Stirrers, ideal for contractors and large ponds

Length	7.8m
Adjust	Hydraulic
Galvanised	Yes
Bearings	Enduro Block
Propeller	Extra Large Typhoon™
Min Tractor Requirements	140hp



ONLY
\$12,450_{+gst}

SUPER EASY FINANCE DEAL 1.99% INTEREST



\$1
ONLY



Nevada 12,800L Tandem Slurry Tanker

A slurry tanker is a great investment for your farm. It is practical, efficient, and easy to use, allowing you to get the full value from the effluent you're producing.

One cow produces, on average, 70 litres of effluent per day and about 10% of this is produced during milking. With a tanker, you can put this to profitable use.

The 12,800 ltr slurry tanker takes just three minutes to fill and three to four minutes to empty. And, the tandem axle and ADR suspension makes it very easy to manoeuvre, so you can reach and feed every corner of your farm, saving you thousands in fertiliser costs.

Major benefits

- It takes just 3 minutes to fill
- Nevada RainWave™ applicator for heavier droplet size penetrating the soil faster, leading to more growth
- Minimal wind drift and odour
- No mess, work from the cab
- Tankers are braked, making them safe
- Large internal baffles stop surging
- No skidding or scuffing with tandem axle tankers
- Large flotation tyres and ADR suspension for a smooth ride
- Ballast vacuum pump 13,500L/min, for high capacity loading and discharge
- Galvanised tank that is built to last.

736*
PER MONTH

MOST POPULAR

This is our most popular size slurry tanker in New Zealand, and with this 1.99% interest rate, there has never been a better time to buy. Give us a call. 0800 464 393.



FROM
\$109,500_{+gst}

Nevada Electric Stirrers

Efficient, safe and reliable, a Nevada electric pond stirrer is extremely powerful, giving you the ultimate mixing performance.

These stirrers are shore-mounted, with a horizontal thrust for efficient mixing, along with easy access for safe on-shore maintenance. There are seven electric stirrers available to suit most dairy effluent ponds, with power output from 10-25hp.



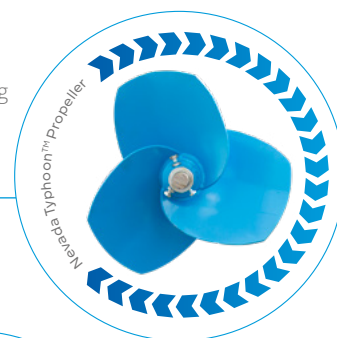
**Made in
New Zealand**



**2 Year
Warranty**

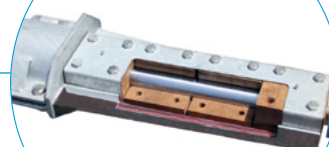
Nevada Typhoon™ 3 Blade Propeller

Achieves a much higher mixing performance than pumps or submerged motors with the same use of energy.



Enduro Block Hardwood Bearings

Tough, oil-impregnated hardwood that is resistant to both abrasions and corrosion. No sensitive oil seals.



Powerful Motor

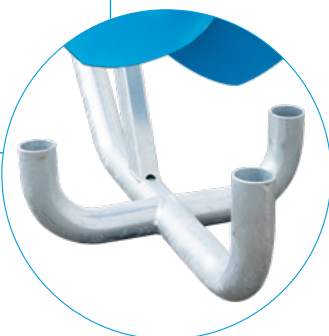
Power outputs from 10-25hp.

Galvanised Frame

Nevada pond stirrers are made from high-grade steel and galvanised for durability.

Pond Liner Protection Frame

Even though the optimal stirring position is mid-pond, we've included a pond liner protection frame for peace of mind, that also doubles as a handy resting point when onshore.



Easy Angle and Height Adjustment

With 360° rotation to ensure optimum placement in the pond, along with full rotation to shore for maintenance.

7m FROM
\$19,600 +gst

9m FROM
\$21,800 +gst

	EL710	EL715	EL720	EL910	EL915	EL920	EL925
Power	10hp	15hp	20hp	10hp	15hp	20hp	25hp
Length	7m	7m	7m	9m	9m	9m	9m
Galvanised	Yes	Yes	Yes	Yes	Yes	Yes	Yes
Bearings	Enduro Block	Enduro Block	Enduro Block	Enduro Block	Enduro Block	Enduro Block	Enduro Block
Propeller	Typhoon™	Typhoon™	Typhoon™	Typhoon™	Typhoon™	Typhoon™	Typhoon™

**MOST
POPULAR
EL915**

10%
DEPOSIT

0%
INTEREST

ONLY
\$968*
PER MONTH

How Do You Get a Pond Stirrer to Pay for Itself?



What we've seen is that the cost of hiring contractors to empty a clogged-up effluent pond would pay for a stirrer many times over. In fact, it is best not to think of it as a pond, it is more of a vault that holds a precious resource.

You've invested a lot into your cows – hay, silage and feed and what comes out the other end is full of nutrients, the best fertiliser you can get. With a bit of TLC, your pond will pay you back.

Your pond is just like a washing machine, if you don't agitate the contents, it's not going to perform. Well-mixed effluent is nutrient-rich; a well-mixed pond will not lose capacity.



The problem with your crust

When your pond starts to crust over, it is a sure sign that the solids in the effluent are separating. The fibrous material is floating to the top and creating a crust. A good rule of thumb is that if you have a 500mm of crust on your pond, you will have twice that on the bottom, so on a three metre deep pond, you are losing half your capacity, throwing your storage calculations out the window. All that grass, reeds and weeds growing on the top demonstrates the high nutrient value of your effluent, and it is much better to have that grass growing on your paddock rather than the crust.

Regular stirring

One hour of mixing before application keeps the solids in suspension. This has two benefits. Firstly, it makes it much easier to pump. There will be no sudden rush of solids that can create blockages. It will also guarantee that the mixture that you are applying to the paddocks is full of the nutrients you need to grow grass. Regular stirring also prevents the build up of solids on the bottom of the pond. What you don't want to do, is to leave it to itself. It only takes an hour for the solids to start separating and dropping to the bottom of the pond. Without regular stirring, this builds over time, robbing you of storage space and becomes an expensive problem to fix.

Centrifugal force

When it comes to what stirrer to choose, you have a few options. We'd always recommend a shore-based stirrer. It is not only safer and easier to service and maintain, it also does a better job. You can get vertical floating stirrers that push the liquid downward from the centre of the pond. This set-up works for a sump because it is only three to four metres wide, but for bigger bodies of liquid, they don't have the muscle. A PTO or electric shore-based stirrer has the power to push the body of liquid around the perimeter of the pond. Once the liquid gets moving, it creates a consistent speed of one metre per second, which stops the particles separating and churns up the whole pond.

Once mixed, the particles will stay in suspension for one hour. It is a good idea to leave the stirrer going while you are pumping as this will give you an even mix. The good thing about electric stirrers is that they can be left on a timer, removing any hassle and ensuring your effluent is ready to be spread when you need it.

Drop Effluent Pond Levels Fast

With custom options to fit your specific needs and the ability to apply 1,500,000+ litres per day with ease, it's time to upgrade your effluent spreading game.

Nevada's drag hose systems allow you to spread those effluent nutrients more effectively, ensuring more nutrients reach the ground and reducing nitrogen being released into the atmosphere.

Economical and efficient, our drag hose systems will have you spreading further, fully utilising the nutritional value of your effluent and reducing storage levels in no time.

Purchased Individually or as Part of a Package Deal

Explore our drag hose system options online, or call one of our experts on 0800 464 393 to work out the best effluent management set-up for your farm.

www.nevadagroup.co.nz/equipment/drag-hose-systems/

OROFLEX Layfat Drag Hose

Top quality PU rubber lay flat hose, manufactured in Europe.

- Standard hose length 200m
- Puncture resistant and ideal for rugged farm use
- 5yr manufacturers warranty



	HOSHO130	HOSHO226	HOSHO229	HOSH2021
Outside Diameter	3" (76mm)	4" (102mm)	5" (127mm)	6" (152mm)
Wall Thickness	2.30mm	3.50mm	3.70mm	3.80mm
Working Pressure	175psi	245psi	200psi	175psi
Burst Pressure	460psi	605psi	505psi	435psi
Tensile Strength	5,300kg	13,100kg	18,000kg	25,000kg
Nominal Weight	0.68kg/m	1.30kg/m	1.70kg/m	2.05kg/m
Bend Radius at WP	1.45m	1.75m	1.90m	2.00m

Nevada 3PL RainWave™ Applicator

A fantastic overall effluent spreading solution. The 3 point linkage system is very light on the tractor, making it an excellent choice over softer soils. The simplicity of the RainWave™ makes it a very economical option, and the compact design means there's no issues with getting through farm gates or spreading over hilly or uneven ground. Large droplet size, so very minimal wind drift.

- Better nutrient use
- Gentle low-pressure rain pattern
- Less pasture damage
- Low application depth (1-10mm)
- Safe tractor speeds (less than 7km/h)
- High volume (100m³/h – 200m³/h)
- Low maintenance
- Handles thick slurry (up to 20% solids)



Nevada Hose Reeler's

Nevada has developed and perfected the range of hose reelers to provide the optimum solution combining heavy duty strength and ease of use. Offering both random wrap and segmented mounted drag hose reelers. Each comes with a heavy-duty 3-point linkage and a female Quick Fit 'A' frame. Once the male 'A' frame is in place, it's secured with two loose-fitting pins.

- Smaller Hose Reeler holds: 800m of 3", 600m of 4", or 500m of 5" layflat hose
- Larger Hose Reeler holds: Holds 1000m of 4", 800m of 5", or 600m of 6" layflat hose
- Ideal for small to very large dairy farms with hilly ground or odd shaped paddocks
- Random wrap
- Double hydraulic drive
- Removable spools
- Includes optional hose guide



Larger sizes also available

Rovatti PTO Pump Set

With four options to choose from the Rovatti PTO Pump Set is a suitable option for all contractors or any size dairy farm.

- 5m suction hose with strainer
- Drive shaft
- Hard-face lubricated mechanical steel

	TL2-85	TL3-80	TL3K-80	TL4K-125
Capacity	Up to 100,000L/hr	Up to 150,000L/hr	Up to 150,000L/hr	Up to 220,000L/hr
Flow	10-100m ³ /h	20-150m ³ /h	20-150m ³ /h	20-220m ³ /h
Pressure	50-75H(m)	90-110H(m)	90-105H(m)	90-110H(m)
Tractor Requirements	40-80hp	40-90hp	50-100hp	60-130hp
Mounting Options	Standard: 3 point linkage		Option: Trailer mount	

ONLY
\$11,450 +gst

ONLY
\$12,450 +gst

ONLY
\$16,350 +gst

ONLY
\$16,750 +gst

Progressive Cavity Effluent Pumps



Progressive cavity effluent pumps have a lot of advantages over floating pumps. For a start, they are a lot more efficient.

They are at the side of the pond, so access is much simpler and safer, which means servicing is easier. You also use less power to get the same output, which, over the year, is money in your pocket. On top of that, the pump gives you a constant volume. There are no surprises; it doesn't matter how far the effluent has to travel, you have a uniform flow.

No high-tension bending shaft,
Complete with quality sealed universal joints for smooth operation.

Cast iron body with hard plated stainless steel shaft and rotor. Nitrile starter for long life.

Pumps up to 15L/sec

Quality WEG motor

Self-priming, non-clogging operation with high suction lift capabilities.

Extended pumping end geometry for increased life.

Heavy duty bearings for peace of mind.

MODEL

2060

20% DEPOSIT

0% INTEREST

ONLY **\$671*** PER MONTH

FROM **\$16,990** +gst

Model	2060	1890	2690	3690	29100
Pressure	60m(H)	90m(H)	90m(H)	90m(H)	100m(H)
Flow	20m ³ /h	18m ³ /h	26m ³ /h	36m ³ /h	29m ³ /h
Power Requirements	5.5kW	7.5kW	11kW	15kW	15kW
Flange Size	80mm	100mm	100mm	125mm	125mm
Solids (Hard/Soft)	9.5/38mm	12/48mm	12/48mm	15/60mm	15/60mm



Made in
New Zealand

Nevada PondBoom™

Designed to **quickly** and **safely** retrieve your effluent pump from the pond for servicing or maintenance.

When a shore mounted pump isn't an option, the Nevada PondBoom™ is the answer. Servicing and maintenance is faster as the pump can be quickly retracted and then deployed again, all from the safety of the shore.

The PondBoom™ eliminates the need for anyone to venture out onto the dairy effluent pond. Available in 7, 9 and 11 metre lengths. Suits a DODA or Yardmaster floating pump.



Intelligent Pump Controller Equipped with advanced sensors, this controller swiftly detects and responds to blockages and run-dry events, shutting the pump down immediately and automatically, preventing damage to the pump.

Benefits

- Versatile and suitable for various effluent management systems
- High efficiency with low power requirements
- Even application with constant flow rate
- Long and reliable service thanks to robust construction and low running speed
- Low maintenance and reduced operating costs

Complete and ready to install, each unit includes:

- Galvanised head works
- Intelligent controller unit
- Suction hose and base mount ready to be mounted to concrete
- Outlet pipe connection



PUMP CAN BE QUICKLY RETRIEVED TO SHORE



PIVOTS INTO POSITION AT END OF BOOM



AND THE PUMP IS READY TO GO!



PIVOTS INTO POSITION AT END OF BOOM

Travelling Effluent Irrigators



Spider Deluxe

Suits most average sized farms

4 speed travelling irrigator, designed to operate with a 2800rpm, suits small to medium sized farms.

Travel Distance	250-300m
Spreading Width	20-35m
Boom Width	8.5m
Min Pressure	2bar
Max Pressure	6bar
Max Draghose	75mm od
Flow Rate L/hr	15,750 - 25,755

FROM
\$6,345_{+gst}



Greenback Spider

Designed for reliability and simplicity

Simple speed changer with 5 speeds, allows greater control of effluent application depths.

Travel Distance	300-400m
Spreading Width	30-50m
Boom Width	9.0m
Min Pressure	2bar
Max Pressure	6bar
Max Draghose	90mm od
Flow Rate L/hr	19,625 - 30,120

FROM
\$7,565_{+gst}



Greenback Magnum

Powerful Nevada spec'd irrigator

Incorporating a travelling irrigator with the power of a raingun. With a wetted width more than twice that of a traditional travelling irrigator.

Travel Distance	300-400m
Spreading Width	30-80m
Boom Width	8.5m
Min Pressure	2bar
Max Pressure	6bar
Max Draghose	90mm od
Flow Rate L/hr	17,640 - 51,360

FROM
\$10,880_{+gst}

NZ 0800 464 393

nevadagroup.co.nz

* Nevada Ltd endeavors to ensure that the information presented in this publication is accurate and current. However, we do not accept any liability for errors, omissions, or outdated content. Nevada Ltd reserves the right to alter specifications, components, design and prices, at our discretion and without notice. All material and information presented in this publication is copyright 2025 Nevada Ltd. All rights reserved. All prices are in NZD excluding GST and freight unless stated otherwise. Special prices are for a limited time or while stocks last. All Nevada finance is subject to standard lending criteria. Other terms and conditions may apply.

 **nevada**[®]
Sustainable Effluent Management