

# SPARE PARTS

## Battioni Ballast Vacuum Pumps



Specialist provider of  
**DAIRY EFFLUENT EQUIPMENT**

**NZ** 0800 464 393

**nevadagroup.co.nz**

**AUS** 1800 963 490

**nevadagroup.com.au**

 **nevada**<sup>®</sup>  
Sustainable Effluent Management



## Battioni Ballast Vacuum Pumps

Battioni Ballast pumps are commercial grade vacuum pumps that are commonly used in agricultural applications such as on Slurry Tankers.

These pumps feature self-adjusting vanes, built-in changeover valves for vacuum or pressure operation and positive lubrication supplied by a built-in gear pump and oil reservoir. Nevada Slurry Tankers sized from 10,000L to 14,700L are fitted with the 13500M, 16,500L - 20,150L slurry tankers are fitted with the 16,500MA model whilst slurry tankers from 22,200L are fitted with the 18000

### Battioni Ballast 13500M

CODE	DESCRIPTION
ACBPB13500	13,500L p/min Flow Long life Vanes. Air Injection cooling giving 70% Duty Cycle. Unique 'Crash Protection System'. Forced Lubrication and 80mm H/Tails



### Battioni Ballast 16000MA

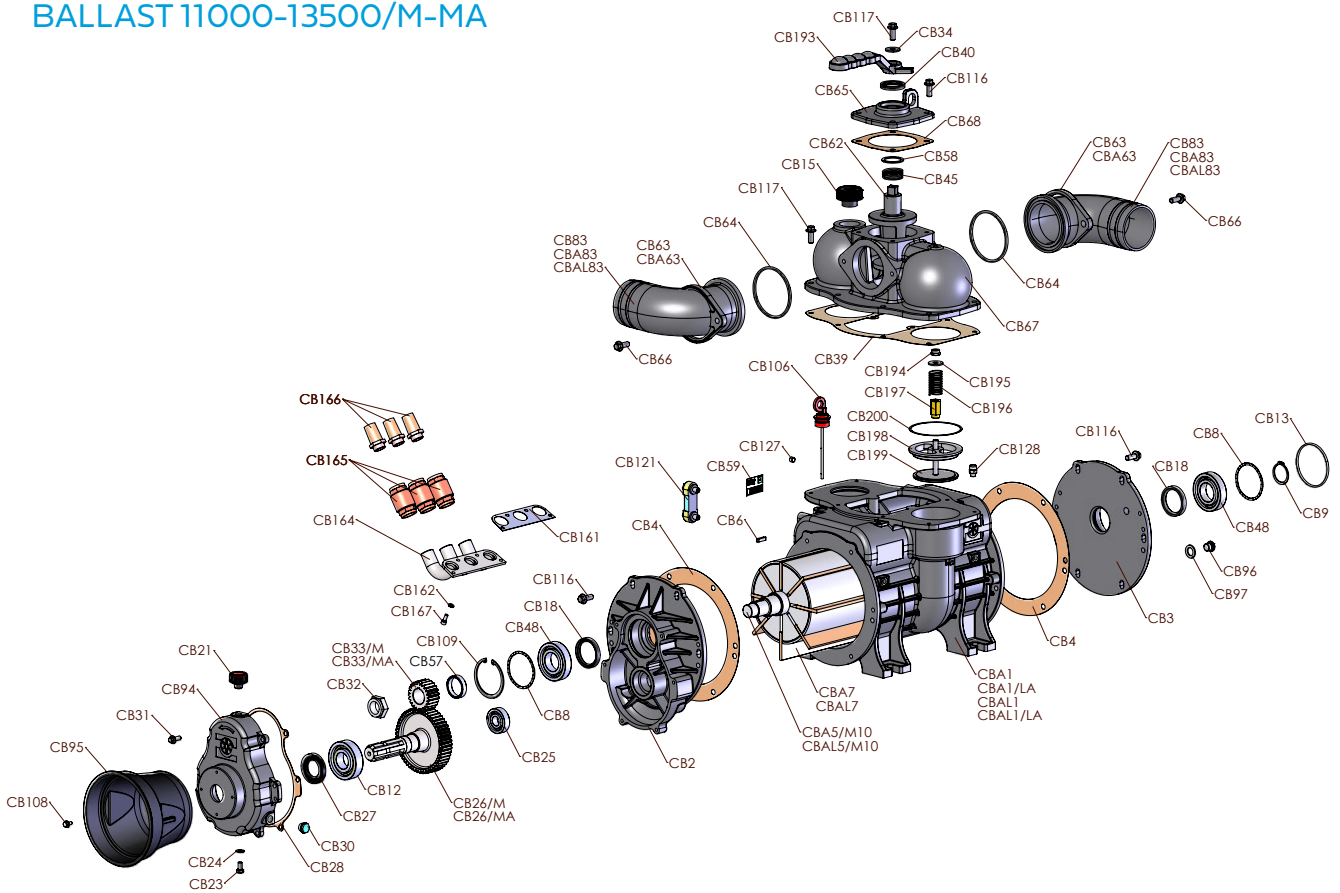
CODE	DESCRIPTION
ACPB16000	16,000L p/min Flow Long Life Vanes. Air Injection cooling giving 70% Duty Cycle. Unique 'Crash Protection System' Automatic Lubrication and 100mm H/Tails. 1000RPM



### Battioni Ballast 16500MA

CODE	DESCRIPTION
ACPB16500	16,800L p/min Flow Long Life Vanes. Air Injection cooling giving 70% Duty Cycle. Unique 'Crash Protection System' Automatic Lubrication and 100mm H/Tails. 1000RPM

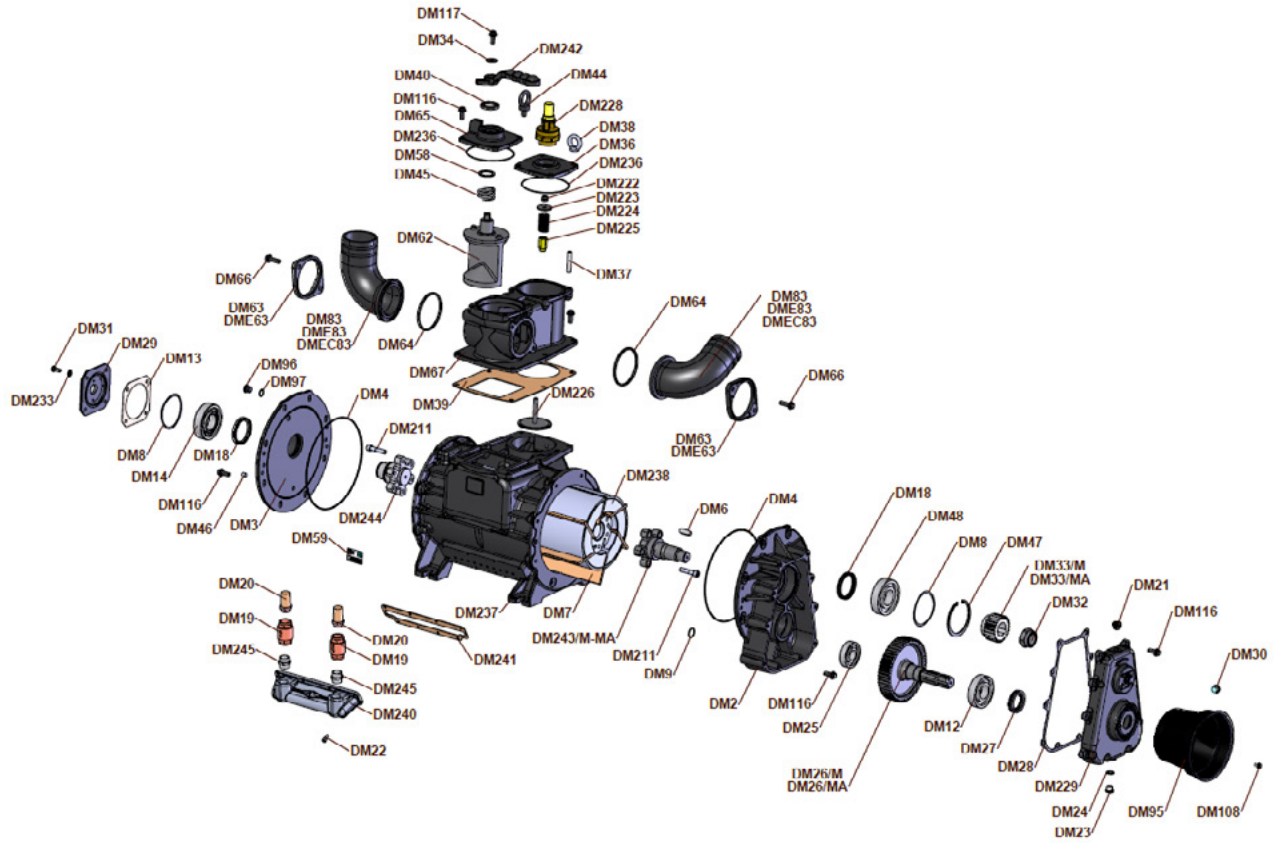




ARTICLE	CODE	DESCRIPTION
CBA1	4010101130	HOUSING - BALLAST 11000 LF
CBA1/LA	4010101131	HOUSING - BALLAST 11000 LA
CBA1/LA/A	4010101190	HOUSING - BALLAST 11000 LA - ATEX
CBAL1	4010101132	HOUSING - BALLAST 13500 LF
CBAL1/LA	4010101133	HOUSING - BALLAST 13500 LA
CB2	4010301028	GEARBOX - MEC 9000-11000-13500/M
CB3	4010401061	FRONT & BACK FLANGE MEC 9000-11000-13500
CB4	4030108048	BODY GASKET MEC 9-11-13500
CBA5/M10	4010220179	ROTOR - BALLAST 11000/M KEY 10
CBAL5/M10	4010220180	ROTOR - BALLAST 13500/M KEY 10
CB6	5050707032	KEY10X8X25
CB7	4070113192	LONG LIFE BLADE MEC 9000 300X60X6,5
CBA7	4070113193	LONG LIFE BLADE MEC 11000 370X60X6,5
CBAL7	4070113194	LONG LIFE BLADE MEC 13500 460X60X6,5
CB8	5012207001	COMPRESSION & THRUST RING D80
CB9	5050507017	CIRCLIP - D 40 E
CB12	5012107010	BALL BEARING - 6307
CB13	5030210028	SEAL RING - OR 2337 LF PUMP
CB15	5060605006	BLACK PLUG - D 2" GAS
CB18	5030300042	OIL SEAL - 48X62X10 DCV - FKM
CB21	5060605001	OIL PLUG - D 3/8" GAS
CB23	5050107018	SCREW - M 10X16 TE
CB24	5050202002	ALUMINIUM WASHER - D 10X16X1,5
CB25	5012107006	BALL BEARING - 6304
CB26/M	4020507003	GEAR WITH SHAFT - Z53-M2,5 MEC 6,5-8000
CB26/MA	4020507012	GEAR WITH SHAFT MEC9-13500/MA Z43-M2,5
CB27	5030300005	OIL SEAL - 35X62X10
CB28	4030108049	GEARBOX COVER GASKET MEC 9-11-13500
CB30	5060105004	OIL LEVEL PLUG - D 3/8" GAS
CB31	5050107168	SCREW - M 8X40 TEF
CB32	5050300002	SELF-LOCKING NUT - M 27X2X16
CB33/M	4020607059	PINION MEC 9-11-13500/M Z23-M2,5
CB33/MA	4020607057	PINION MEC 9-11-13500/MA Z33-M2,5
CB34	5050207032	WASHER - D 10X28X4 - DIN 6340
CB39	4030109035	MANIFOLD GASKET MEC 9-11-13500
CB40	5030300015	OIL SEAL - 35X50X7
CB45	4012007011	SPRING - MEC 9-11-13500
CB48	5012107004	BALL BEARING - 6208
CB57	4011707067	SPACER ROTOR M MEC 9000-11000-13500
CB58	5050207031	TEFLON WASHER REV.GEAR MEC 9-11-13500
CB59	5101800000	THERMO LABEL
CB62	4010701018	REVERSING GEAR MEC 9-13500
CB63	4010406017	FLANGE FOR ELBOW - STAR D80

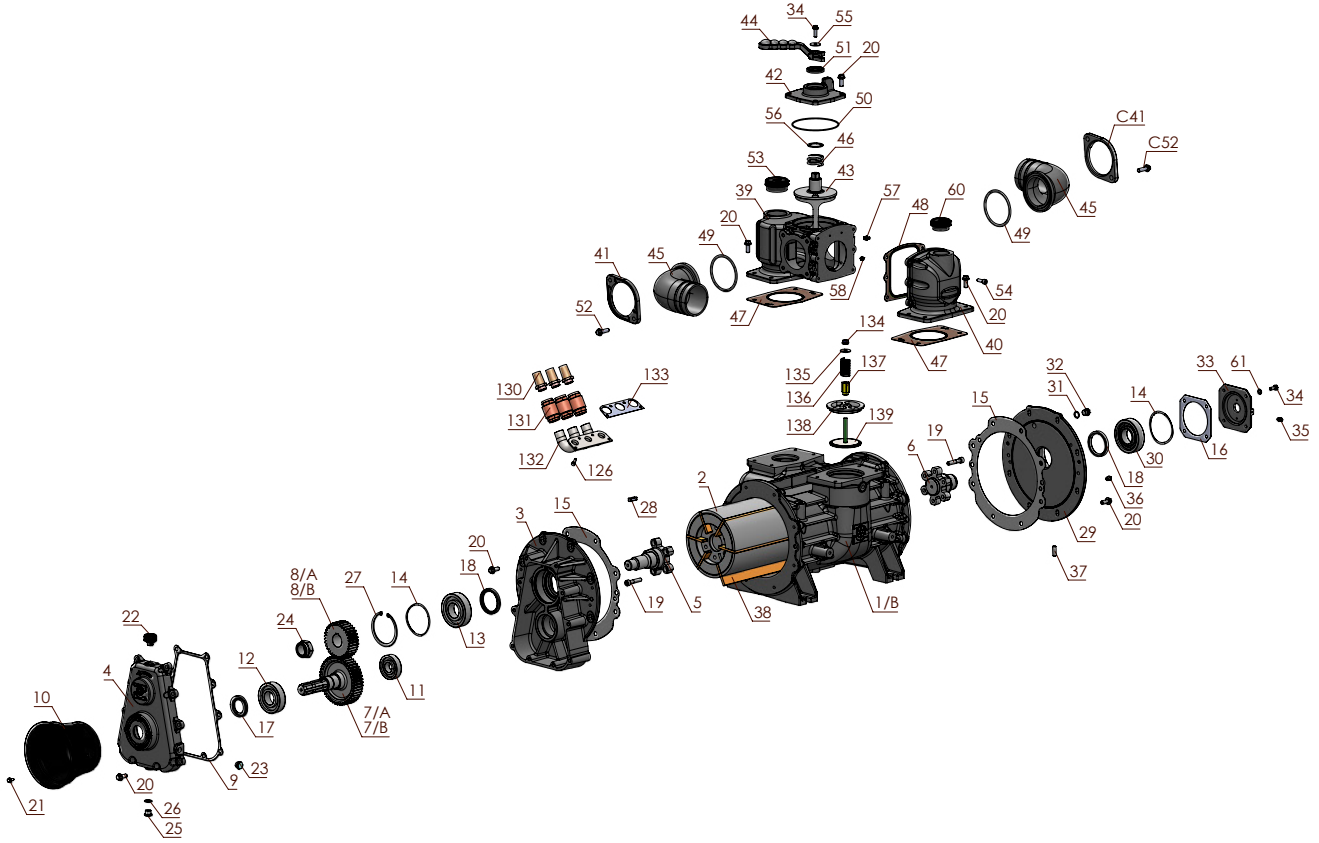
ARTICLE	CODE	DESCRIPTION
CBA63	4010406015	FLANGE FOR ELBOW - STAR D100
CB64	5030210008	SEAL RING - OR 189 STAR UL
CB65	4010601056	MANIFOLD COVER - MEC 9_13500-STAR-WPT/UL
CB66	5050107054	SCREW - M 10X35 TE
CB67	4010501026	MANIFOLD MEC 9000-11000-13500
CB68	4030109025	MANIFOLD COVER GASK-MEC 9_13500-STAR-WPT
CB83	4010901018	REVOLVING ELBOW - MEC 9_13500-STAR D 76
CBA83	4010901019	REVOLVING ELBOW - MEC 9_13500-STAR D 80
CBAL83	4010901020	REVOLVING ELBOW - MEC 9_13500-STAR D 100
CB88/4	4010401063	FRONT FLANGE - MEC 9000-11000-13500/H G.4
CB94	4010601154	GEARBOX COVER - MEC 9-13500
CB95	4060505000	SHAFT GUARD - CE
CB96	5050906006	PLUG - D 16X1
CB97	5050202007	ALUMINIUM WASHER - D 16X20X1,5
CB103	5050107026	SCREW - M 10X25 TCEI
CB106	5060100001	OIL LEVEL ROD - MM 18X55
CB108	5050107107	GALVANIZED SCREW - M 6X10 TEF
CB109	5050507011	CIRCLIP - D 80 I
CB116	5050107109	SCREW - M 10X25 TEF - FL/ZIGR 8.8
CB117	5050107108	SCREW - M 8X25 TEF - FL/ZIGR 8.8
CB118	5030210063	SEAL RING - OR 177.47X2.62 MEC 9-13500/G
CB119	4010601153	FRONT COVER - MEC 5-13500/P AL
CB120/A	5090000123	TEMPERATURE SWITCH - POZZ. 1/2" GAS
CB121	4060505039	OIL LEVEL INDICATOR MEC 9000-11000-13500
CB127	5050903003	PLUG - D 1/8"
CB128	5050903004	PLUG - M 10X1 WITH AIR RELEASING
CB161	4030110028	GASKET BALLAST2 MEC 11000-13500
CB162	5050207002	SMOOTH WASHER - D 6
CB164	4010007057	DUCT BALLAST 11000-13500
CB165	5040303030	UNIDIRECTIONAL VALVE D 3/4" BALLAST
CB166	5080005004	AIR FILTER - ONE-WAY VALVE 3/4"
CB167	5050107008	SCREW - M 6X16 TCEI
CB193	4010801043	HANDLE SQUARE CONNECTION
CB194	5050300016	SELF-LOCKING NUT - M 10X1 VARGAL
CB195	5050207008	BLANK WASHER - D 10X40
CB196	4012007015	SPRING FOR POPPET VALVE BALLAST-AIDA
CB197	4011707114	GUIDE FOR POPPET VALVE BALLAST-AIDA
CB198	4010401082	FLANGE SUPPORT CHECK VALVE - BALL9-13500
CB199	4010006026	POPPET VALVE - BALLAST16000/BALLAST AIDA
CB200	4030109060	POPPET V. LOCK GASKET - BALLAST 9-13500
CBA122/BAL	6010201049	REBUILD KIT - BALLAST 11000
CBAL122/BAL	6010201050	REBUILD KIT - BALLAST 13500

BALLAST 16000 M-MA



ARTICLE	CODE	DESCRIPTION
DM2	4010301032	GEARBOX - BALLAST 16000/M-MA
DM3	4010401074	FRONT & BACK FLANGE BALLAST 16000
DM4	5030210078	SEAL RING - OR 3101 257.8 X 2.62
DM8	5012207003	COMPRESSION & THRUST RING D.100
DM9	5030210079	SEAL RING - OR 2093
DM12	5012107050	BALL BEARING 6308
DM14	5012107049	ROLL BEARING NU309
DM18	5030300045	OIL SEAL - 60X75X10
DM19	5040303030	UNIDIRECTIONAL VALVE 3/4" BALLAST
DM20	5080005004	AIR FILTER - ONE WAY VALVE 3/4"
DM21	5060605001	OIL PLUG - D. 3/8" GAS
DM25	5012107051	BALL BEARING 6306
DM26/M	4020507015	GEAR WITH SHAFT BALLAST 16000/M Z58-M3
DM26/MA	4020507016	GEAR WITH SHAFT BALLAST 16000/MA Z47-M3
DM27	5030300014	OIL SEAL 40 X 62 X 10
DM28	4030108067	GASKET GEARBOX COVER BALLAST 16000
DM29	4010601187	LA PUMP SUPPORT BACK COVER
DM32	5050300003	SELF-LOCKING NUT - M30X2X25
DM33/M	4020607060	PINION BALLAST 16000/MZ23-M3
DM33/MA	4020607061	PINION BALLAST 16000/MA Z34-M3
DM35	4060505057	MANIFOLD FILTER CARTRIDGE BALLAST 16000
DM36	4010601179	FILTER COVER BALLAST 16000
DM38	5051206003	FEMALE EYEBOLT - M10 - CE GALVANISED
DM39	4030109056	MANIFOLD GASKET - BALLAST 16000
DM40	5030300015	OIL SEAL - 35 X 50 X 7
DM44	5051206004	MALE EYEBOLT - M12 - CE
DM45	4012007011	SPRING - MEC 9-11-13500
DM48	5012107052	BALL BEARING 6309

ARTICLE	CODE	DESCRIPTION
DM53	5030300031	OIL SEAL 45 X 62 X 10
DM57	4060505060	LUBRIC.PUMP GUARD BALLAST 16000
DM58	5050207031	TEFLON WASHER REV.GEAR MEC 9-11-13500
DM62	4010701021	REVERSING GEAR - BALLAST 16000
DM63	4010406017	FLANGE FOR ELBOW - D80
DME63	4010406015	FLANGE FOR ELBOW - D100
DM64	5030210008	SEAL RING - OR 189 STAR UL
DM65	4010601186	REVERSING GEAR COVER - BALLAST 16000
DM67	4010501033	MANIFOLD BALLAST 16000 FILTER PREDISPOSED
DM80	5030300016	OIL SEAL 65 X 85 X 10
DME83	4010901019	REVOLVING ELBOW BALLAST 16000 - D.80
DMEC83	4010901020	REVOLVING ELBOW BALLAST 16000 - D.100
DM89	5050507012	CIRCLIP - D.45E
DM91	4010006002	CONNECTOR JOINT - L.F.
DM118	5030210050	SEAL RING - OR4475 NBR
DM224	4012007015	SPRING FOR VALVE BALLAST-AIDA
DM225	4011707114	GUIDE FOR VALVE BALLAST-AIDA
DM226	4010006026	VALVE FOR BALLAST 16000
DM229	4010601180	GEARBOX COVER BALLAST 16000
DM236	5030210083	SEAL RING - OR3525
DM237	4010101180	HOUSING - BALLAST 16000
DM238	4010220223	ROTOR - BIG MEC 16000
DM240	4010501035	DIFFUSER BALLAST 16000
DM241	4030109055	DIFFUSER GASKET - BALLAST 16000
DM242	4010801043	HANDLE - MEC 9-13500
DM243/M-MA	4011907117	FRONT PIN BALLAST 16000/M-MA-6P
DM245	5040407006	STRAIGHT CONNECTOR - M/MA 3/4" GAS
DM252	5050507029	CIRCLIP - D55E - DIN 471



ARTICLE	CODE	DESCRIPTION
1/B	4010101209	HOUSING BALLAST 16500
2	4010220244	CONTINUOUS CASTING ROTOR MEC/BALLAST 16500
3	4010301032	GEARBOX - BALLAST 16000/M-MA
4	4010601180	GEARBOX COVER - BALLAST 16000/M-MA
5	4011907117	FRONT PIN BALLAST 16000/M-MA - 6P
6	4011907124	REAR PIN BALLAST 16000 - 6P
7	4020507015	GEAR WHIT SHAFT - BALLAST 16000/M Z58 - M3
8	4020607060	PINION - BALLAST 16000/M Z23-M3
9	4030108067	GASKET GEARBOX COVER - BALLAST 16000/M-MA
10	4060505018	SHAFT GUARD - GARDA-LEDRA CE
11	5012107009	BALL BEARING 6306
12	5012107011	BALL BEARING 6308
13	5012107012	BALL BEARING 6309
14	5012207003	COMPRESSION E THRUST RING Ø 100 - LMKAS 10
15	4030108070	FLANGE GASKET - KPS 550-670
16	4030108023	BACK COVER GASKET - WPT-KTS
17	5030300014	OIL SEAL - 40X62X10
18	5030300045	OIL SEAL - 60X75X10 DCP
19	5050107103	SCREW - M 10X50 TCEI 12.9 UNI5931
20	5050107109	SCREW - M 10X25 TEF - DIN 6921 ISO 8100
21	5050107197	GAVANIZED SCREW - M 6X10 TEF - DIN 6921
22	5060605011	OIL PLUG - D 3/8" GAS
23	5060105004	OIL LEVEL PLUG - D 3/8" GAS
24	5050300003	SELF-LOCKING NUT - M 30X2X25
25	5050906008	PLUG D 3/8" GAS - DIN 908 -
26	5050202008	ALUMINIUM WASHER - D 17X22X1,5
27	5050507028	CIRCLIP -D 100 I - DIN 472
28	5050707033	KEY - 12X8X36
29	4010401074	FRONT E BACK FLANGE BALLAST 16000-KPS
30	5012107067	ROLL BEARING NU 309
31	5050202007	ALUMINIUM WASHER - D 16X20X1,5
32	5050906006	PLUG - D 16x1.5 - DIN 908 -
33	4010601187	L.A. PUMP SUPPORT BACK COVER
34	5050107009	SCREW - M 8X20 TE - UNI5739
35	5050812005	LUBRICATOR - 1/8" GAS
36	5050903001	PLUG - M 10x1 - DIN 906

ARTICLE	CODE	DESCRIPTION
37	5051007029	DOWEL M10X1X30 P.P. UNI 5924
38	4070113283	STANDARD BLADE - MEC/BALLAST 16500 460X67X7,5
39	4010501044	MANIFOLD C115
40	4010007102	ASP. MANIFOLD C115
41	4010406015	FLANGE FOR ELBOW - D 100
42	4010601186	REVERSING GEAR COVER - BALLAST 16000
43	4010701028	REVERSING GEAR - MANIFOLD C115
44	4010801043	HANDLE
45	4010901020	REVOLVING ALBOW - D 100
46	4012007011	SPRING - MEC 9-11-13500
47	4030109072	MANIFOLD GASKET C115
48	4030110034	ASP. MANIFOLD GASKET C115
49	5030210008	SEAL RING - OR 189 STAR UL
50	5030210083	SEAL RING - D 133.02X2.62 OR3525
51	5030300015	OIL SEAL - 35X50X7 TC
52	5050107054	SCREW - M 10X35 TE - UNI5739
53	5060605005	BLACK PLUG - D 1"1/2 GAS
54	5050107143	GALVANIZED SCREW - M 8X30 TCEI
55	5050207022	WASHER D 8X23X4 - DIN 6340
56	5050207031	TEFLON WASHER REV. GEAR. MEC 9-11-13500
57	5050812001	LUBRICATOR - M 10X1
58	5050903003	PLUG - D 1/8" - DIN 906
60	5060605006	BLACK PLUG - D 2" GAS
61	5050207003	WASHER D 8
126	5050107008	SCREW - M 6X16 TCEI
130	5080005004	AIR FILTER - ONE WAY VALVE 3/4"
131	5040303030	UNIDIRECTIONAL VALVE 3/4" - BALLAST
132	4010007057	DUCT BALLAST 11000-13500
133	4030110028	GASKET DUCT BALLAST 11000-13500
134	5050300016	SELF-LOCKING NUT M 10X1,5 VERGAL
135	5050207008	BLANK WASHER Ø 10X40
136	4012007015	SPRING FOR VALVE BALLAST
137	4011707114	GUIDE FOR VALVE BALLAST
138	4010401082	FLANGE SUPPORT CHECK VELVE - BALLAST 9-13500
139	4010006026	POPPET VALVE - BALLAST 16000



Specialist provider of  
**DAIRY EFFLUENT EQUIPMENT**

**NZ** 0800 464 393

**nevadagroup.co.nz**

**AUS** 1800 963 490

**nevadagroup.com.au**

 **nevada**<sup>®</sup>  
Sustainable Effluent Management